

\$189,900 - 4728 Beardsley Avenue, Lacombe

MLS® #A2098923

\$189,900

0 Bedroom, 0.00 Bathroom,
Land on 0.14 Acres

Henner's Landing, Lacombe, Alberta

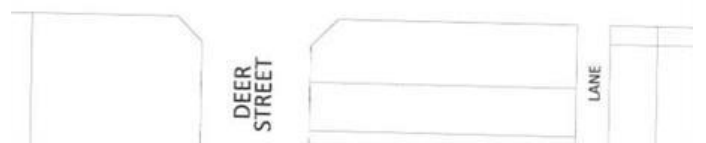
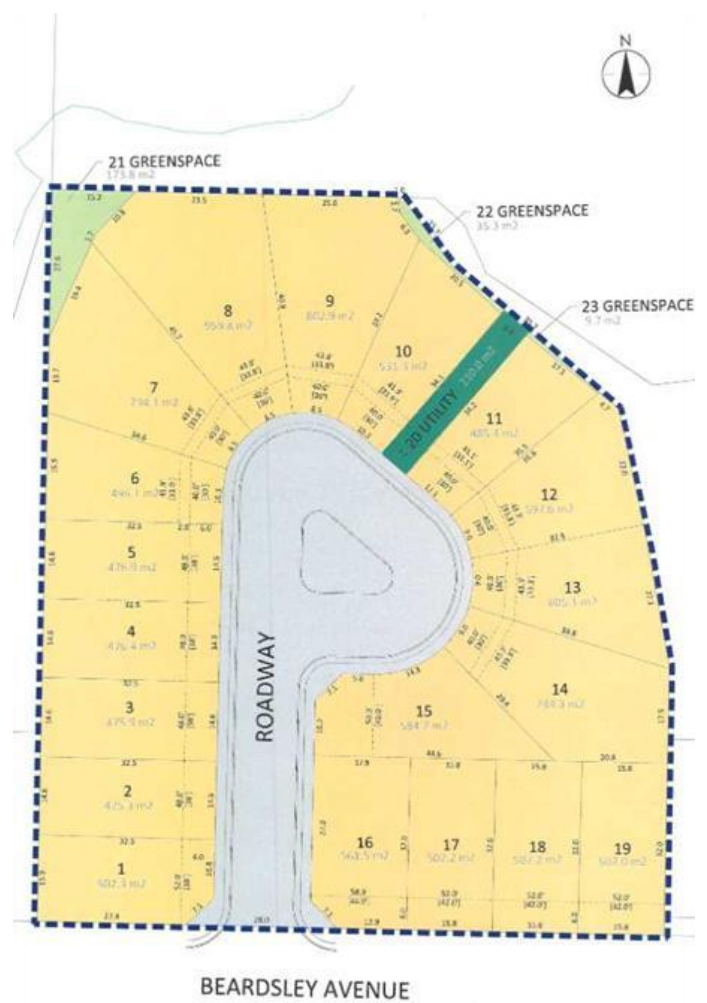
Arguably the best lots available in Lacombe to build on. Located in Lacombe's newest subdivision featuring 19 lots. Most lots feature walkout options and spectacular views of the lakes. Backing onto municipal reserves and Lacombe's famous walking trails. These types of lots don't come around often and won't come again anytime soon. Possession is slated for June 1, 2025. If you are looking for that special lot to build your dream home in what will soon be the "œplace to live" in Lacombe here it is.

Essential Information

MLS® #	A2098923
Price	\$189,900
Bathrooms	0.00
Acres	0.14
Type	Land
Sub-Type	Residential Land
Status	Active

Community Information

Address	4728 Beardsley Avenue
Subdivision	Henner's Landing
City	Lacombe
County	Lacombe
Province	Alberta
Postal Code	T4L1Y9



Exterior

Lot Description Corner Lot, Creek/River/Stream/Pond, Cul-De-Sac, Environmental Reserve, Views

Additional Information

Date Listed December 28th, 2023

Days on Market 468

Zoning R1

Listing Details

Listing Office Royal LePage Lifestyles Realty

Data is supplied by Pillar 9â,,ç MLSÂ® System. Pillar 9â,,ç is the owner of the copyright in its MLSÂ® System. Data is deemed reliable but is not guaranteed accurate by Pillar 9â,,ç. The trademarks MLSÂ®, Multiple Listing ServiceÂ® and the associated logos are owned by The Canadian Real Estate Association (CREA) and identify the quality of services provided by real estate professionals who are members of CREA. Used under license.