

\$1,200,000 - 0 Coachill Street, Blackfalds

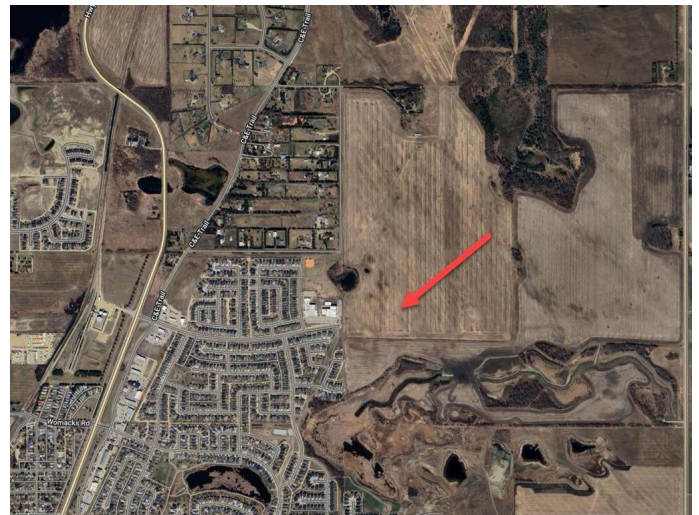
MLS® #A2117771

\$1,200,000

0 Bedroom, 0.00 Bathroom,
Land on 42.95 Acres

Cottonwood Estates, Blackfalds, Alberta

Introducing a prime development opportunity in the thriving town of Blackfalds, Alberta! This 42.95-acre parcel, located on the northeast corner of Blackfalds, offers a rare chance to create a stunning residential & multifamily development. Nestled amidst the natural beauty of trees and wetlands, this parcel provides a picturesque setting for a new community. Imagine designing homes that blend seamlessly into the surrounding landscape, offering residents a tranquil and peaceful environment to call home. Convenience is key, with major schools just minutes away. Additionally, water, sewer, and stormwater services are readily available on-site, making development a smooth and efficient process. Blackfalds' location along the Highway 2 corridor ensures easy access to major transportation routes, connecting residents to nearby cities and amenities. Don't miss this opportunity to transform this beautiful parcel into a thriving community in the heart of Blackfalds.



Essential Information

| | |
|-----------|------------------|
| MLS® # | A2117771 |
| Price | \$1,200,000 |
| Bathrooms | 0.00 |
| Acres | 42.95 |
| Type | Land |
| Sub-Type | Residential Land |

Status Active

Community Information

Address 0 Coachill Street
Subdivision Cottonwood Estates
City Blackfalds
County Lacombe County
Province Alberta
Postal Code T0M 0J0

Additional Information

Date Listed March 28th, 2024
Days on Market 388
Zoning A

Listing Details

Listing Office eXp Realty

Data is supplied by Pillar 9â„¸ MLSÂ® System. Pillar 9â„¸ is the owner of the copyright in its MLSÂ® System. Data is deemed reliable but is not guaranteed accurate by Pillar 9â„¸. The trademarks MLSÂ®, Multiple Listing ServiceÂ® and the associated logos are owned by The Canadian Real Estate Association (CREA) and identify the quality of services provided by real estate professionals who are members of CREA. Used under license.