

# \$300,000 - 9725 84 Avenue, Grande Prairie

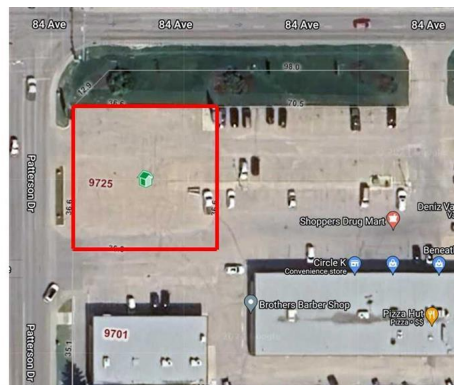
MLS® #A2119618

**\$300,000**

0 Bedroom, 0.00 Bathroom,  
Land on 0.33 Acres

Patterson Place., Grande Prairie, Alberta

PURCHASE LAND FOR \$300000 or do a LAND LEASE FOR \$3/sqft net. What an opportunity! First time for sale or lease. This 0.33 acre lot has its own title and comes with access to plenty of parking at the Patterson shopping Center. This location offers drive through options, easy access from 84th featuring high traffic counts. There is also plenty of walking traffic In the area making it very attractive for a food franchise or retail opportunity, or maybe would like to do a gas station or carwash. The owner will also look at a build to suite for the right tenant. This is a rare opportunity! Look at all the options.



## Essential Information

MLS® #	A2119618
Price	\$300,000
Bathrooms	0.00
Acres	0.33
Type	Land
Sub-Type	Commercial Land
Status	Active

## Community Information

Address	9725 84 Avenue
Subdivision	Patterson Place.
City	Grande Prairie
County	Grande Prairie
Province	Alberta

Postal Code T8V 4Z8

### **Additional Information**

Date Listed May 16th, 2024

Days on Market 327

Zoning CG

### **Listing Details**

Listing Office Royal LePage - The Realty Group

Data is supplied by Pillar 9â„¸ MLSÂ® System. Pillar 9â„¸ is the owner of the copyright in its MLSÂ® System. Data is deemed reliable but is not guaranteed accurate by Pillar 9â„¸. The trademarks MLSÂ®, Multiple Listing ServiceÂ® and the associated logos are owned by The Canadian Real Estate Association (CREA) and identify the quality of services provided by real estate professionals who are members of CREA. Used under license.