

# \$395,000 - 75005 Hwy 845 Highway, Rural Lethbridge County

MLS® #A2159881

**\$395,000**

0 Bedroom, 0.00 Bathroom,  
Land on 3.77 Acres

NONE, Rural Lethbridge County, Alberta

3.77 acres bordering Hwy 4 & 845. High traffic count and good visibility for your business. Fully fenced with security gate, gravel lot, perimeter lighting, 200 amp service, 1000 gallon water tank, septic system.

## Essential Information

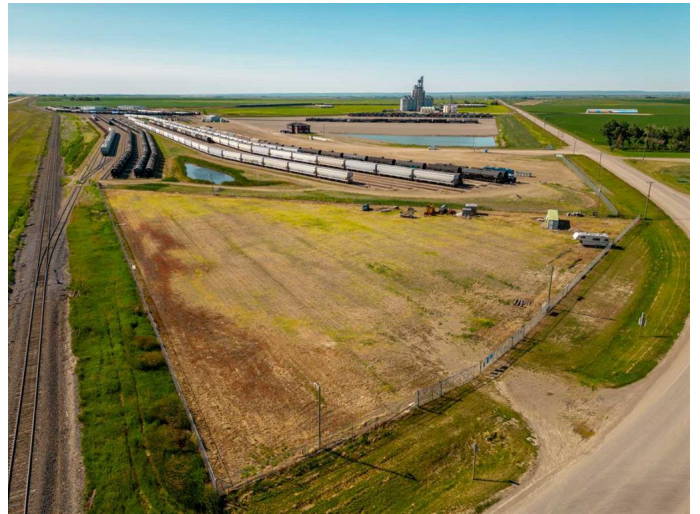
MLS® #	A2159881
Price	\$395,000
Bathrooms	0.00
Acres	3.77
Type	Land
Sub-Type	Commercial Land
Status	Active

## Community Information

Address	75005 Hwy 845 Highway
Subdivision	NONE
City	Rural Lethbridge County
County	Lethbridge County
Province	Alberta
Postal Code	T1K 8G9

## Additional Information

Date Listed	August 19th, 2024
Days on Market	230
Zoning	RC



## Listing Details

Listing Office            Re/Max Real Estate (Central)

Data is supplied by Pillar 9â,,ç MLSÂ® System. Pillar 9â,,ç is the owner of the copyright in its MLSÂ® System. Data is deemed reliable but is not guaranteed accurate by Pillar 9â,,ç. The trademarks MLSÂ®, Multiple Listing ServiceÂ® and the associated logos are owned by The Canadian Real Estate Association (CREA) and identify the quality of services provided by real estate professionals who are members of CREA. Used under license.