

# \$35,000 - 5218 Imperial Lane, Coronation

MLS® #A2165464

**\$35,000**

0 Bedroom, 0.00 Bathroom,  
Land on 0.20 Acres

NONE, Coronation, Alberta

Large lot in Coronation, backs onto Coronation Golf Course, three -25 ft lots-9-11, to be added onto existing title 0015720087, empty lots 12-15 to the west have not been developed are for sale also @ \$55000- 5222 Imperial Lane, Linc#0036583757.

## Essential Information

MLS® #	A2165464
Price	\$35,000
Bathrooms	0.00
Acres	0.20
Type	Land
Sub-Type	Residential Land
Status	Active

## Community Information

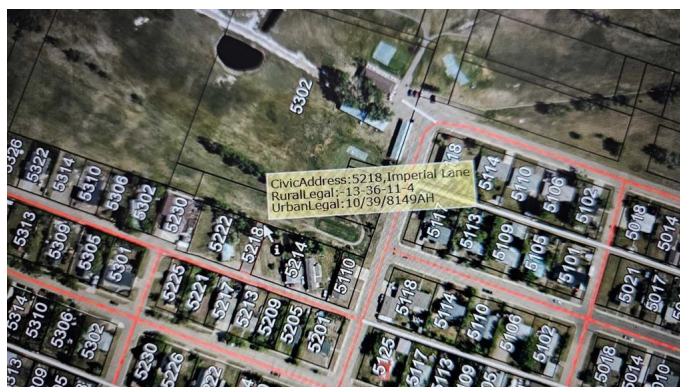
Address	5218 Imperial Lane
Subdivision	NONE
City	Coronation
County	Paintearth No. 18, County of
Province	Alberta
Postal Code	T0C1C0

## Exterior

Lot Description	No Neighbours Behind, On Golf Course
-----------------	--------------------------------------

## Additional Information

Date Listed	September 12th, 2024
-------------	----------------------



Days on Market	218
Zoning	R1

**Listing Details**

Listing Office	Sutton Landmark Realty
----------------	------------------------

Data is supplied by Pillar 9â„¢ MLS® System. Pillar 9â„¢ is the owner of the copyright in its MLS® System. Data is deemed reliable but is not guaranteed accurate by Pillar 9â„¢. The trademarks MLS®, Multiple Listing Service® and the associated logos are owned by The Canadian Real Estate Association (CREA) and identify the quality of services provided by real estate professionals who are members of CREA. Used under license.