

\$99,900 - 92 Range, Rural Saddle Hills County

MLS® #A2168747

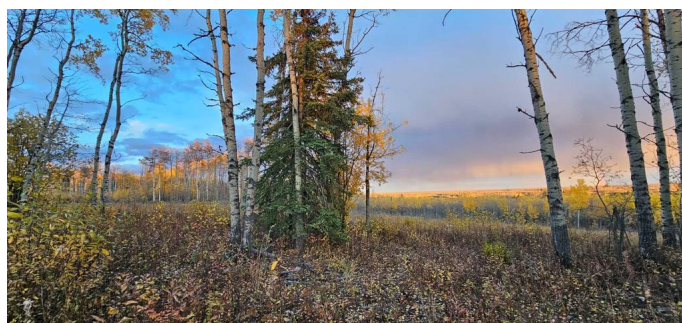
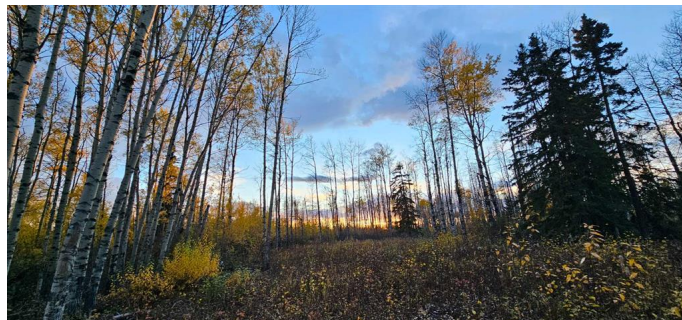
\$99,900

0 Bedroom, 0.00 Bathroom,
Land on 10.01 Acres

NONE, Rural Saddle Hills County, Alberta

Are you searching for the perfect spot to build your dream home, run your business, or both? Look no further than this incredible 10-acre parcel of land! Nestled atop a hill, you'll enjoy breathtaking views of the Saddle Hills and easy access to Spirit River and Dawson Creek.

This private oasis is surrounded by a variety of trees, including pine, spruce, and several species of deciduous trees, as well as a natural water feature that's perfect for attracting wildlife. With approximately 50,000 acres of Crown land to the North of the property, you'll have plenty of space to explore and enjoy. For even more outdoor adventure, this property is less than two miles as the crow flies from Moonshine Lake Provincial Park, and only five miles from the park's main entrance. The additional 150 acres is also listed for sale A2177131. Don't miss out on this incredible opportunity! Contact your Realtor today to learn more about making this stunning property your own.



Essential Information

MLS® #	A2168747
Price	\$99,900
Bathrooms	0.00
Acres	10.01
Type	Land
Sub-Type	Residential Land

Status Active

Community Information

Address 92 Range
Subdivision NONE
City Rural Saddle Hills County
County Saddle Hills County
Province Alberta
Postal Code T0H 0G0

Additional Information

Date Listed November 3rd, 2024
Days on Market 158
Zoning AG

Listing Details

Listing Office Grassroots Realty Group Ltd.

Data is supplied by Pillar 9â„¸ MLSÂ® System. Pillar 9â„¸ is the owner of the copyright in its MLSÂ® System. Data is deemed reliable but is not guaranteed accurate by Pillar 9â„¸. The trademarks MLSÂ®, Multiple Listing ServiceÂ® and the associated logos are owned by The Canadian Real Estate Association (CREA) and identify the quality of services provided by real estate professionals who are members of CREA. Used under license.