

# \$649,000 - 87 Tudor Crescent S, Lethbridge

MLS® #A2170866

**\$649,000**

4 Bedroom, 3.00 Bathroom, 1,852 sqft  
Residential on 0.14 Acres

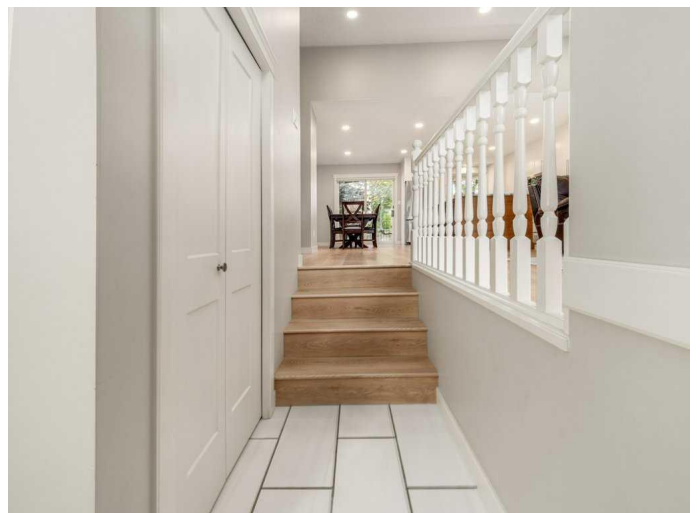
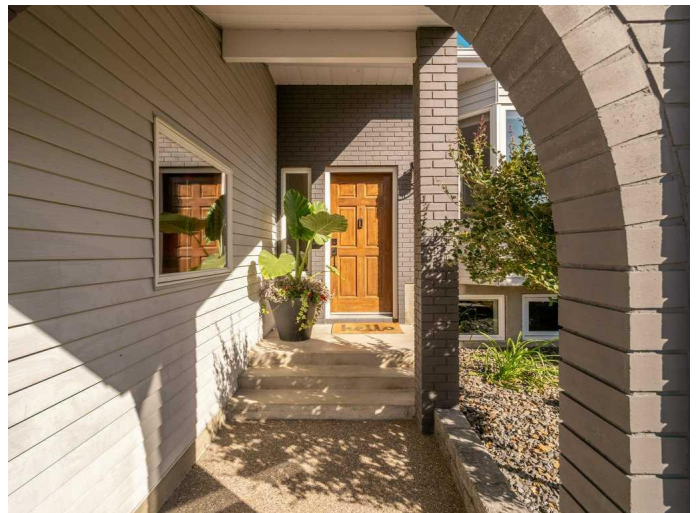
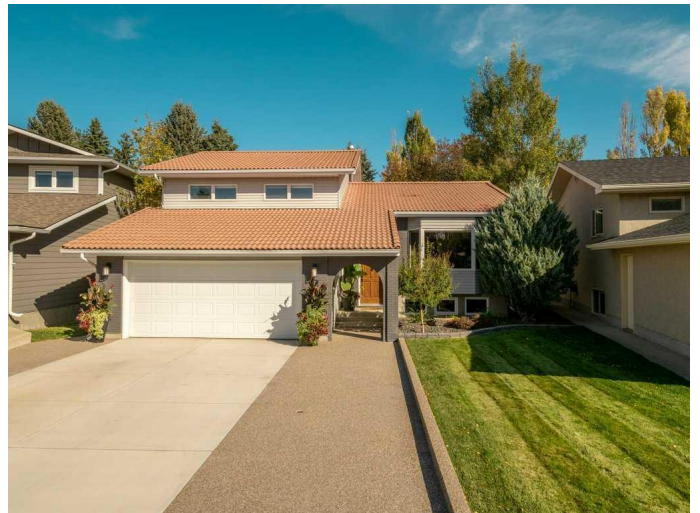
Tudor Estates, Lethbridge, Alberta

This fully renovated split-level home in Tudor Estates is conveniently located near Lethbridge College, the Enmax Centre, and major south-side retailers like Costco, Superstore, and Walmart. The home features an open-concept main floor with a new kitchen, quartz countertops, a large granite island, luxury vinyl plank flooring, and vaulted ceilings with pot lights. Upstairs, the primary bedroom includes a 3-piece ensuite, while the third level offers a cozy family room with a gas fireplace, barn door access to the laundry/half bath, and entry to the attached double garage. Outside, enjoy an east-facing deck, new sod, and underground sprinklers. Call your REALTOR® today!

Built in 1983

## Essential Information

MLS® #	A2170866
Price	\$649,000
Bedrooms	4
Bathrooms	3.00
Full Baths	2
Half Baths	1
Square Footage	1,852
Acres	0.14
Year Built	1983
Type	Residential
Sub-Type	Detached



Style 4 Level Split  
Status Active

### Community Information

Address 87 Tudor Crescent S  
Subdivision Tudor Estates  
City Lethbridge  
County Lethbridge  
Province Alberta  
Postal Code T1K 5C7

### Amenities

Parking Spaces 5  
Parking Double Garage Attached  
# of Garages 2

### Interior

Interior Features Closet Organizers, Vinyl Windows, Wood Windows, Kitchen Island, Open Floorplan, Quartz Counters, Recessed Lighting, Storage, Vaulted Ceiling(s)  
Appliances Central Air Conditioner, Dishwasher, Dryer, Electric Stove, Microwave Hood Fan, Refrigerator, Washer  
Heating Forced Air  
Cooling Central Air  
Fireplace Yes  
# of Fireplaces 1  
Fireplaces Electric  
Has Basement Yes  
Basement Full, Finished

### Exterior

Exterior Features Other, Private Yard  
Lot Description Back Yard, Front Yard, Lawn, Landscaped, Level, Pie Shaped Lot  
Roof Clay Tile  
Construction Brick, Composite Siding, Concrete, Wood Frame  
Foundation Poured Concrete

### Additional Information

Date Listed October 4th, 2024  
Days on Market 180

Zoning R-L

## **Listing Details**

Listing Office 2 PERCENT REALTY

Data is supplied by Pillar 9â„¢ MLSÂ® System. Pillar 9â„¢ is the owner of the copyright in its MLSÂ® System. Data is deemed reliable but is not guaranteed accurate by Pillar 9â„¢. The trademarks MLSÂ®, Multiple Listing ServiceÂ® and the associated logos are owned by The Canadian Real Estate Association (CREA) and identify the quality of services provided by real estate professionals who are members of CREA. Used under license.