

\$560,000 - 342 Energy Way, Rural Red Deer County

MLS® #A2174348

\$560,000

0 Bedroom, 0.00 Bathroom,
Land on 2.85 Acres

Gasoline Alley, Rural Red Deer County,
Alberta

This GREAT parcel has no limit to the possibilities. 2.8 acres of vacant ground that is ready for a new business or an expanding business. Minutes from Highway 2 and easy access to Red Deer south end businesses in minutes!! The Seller is willing to do a Build To Suit or even vendor financing on vendor approval.

Essential Information

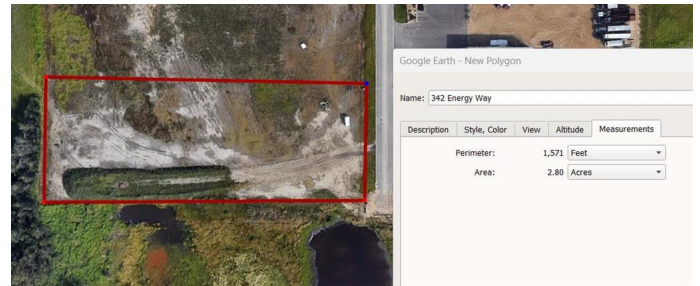
| | |
|-----------|-----------------|
| MLS® # | A2174348 |
| Price | \$560,000 |
| Bathrooms | 0.00 |
| Acres | 2.85 |
| Type | Land |
| Sub-Type | Commercial Land |
| Status | Active |

Community Information

| | |
|-------------|-----------------------|
| Address | 342 Energy Way |
| Subdivision | Gasoline Alley |
| City | Rural Red Deer County |
| County | Red Deer County |
| Province | Alberta |
| Postal Code | T4E 0A6 |

Additional Information

| | |
|-------------|--------------------|
| Date Listed | October 21st, 2024 |
|-------------|--------------------|



| | |
|----------------|-----|
| Days on Market | 188 |
| Zoning | BSI |

Listing Details

| | |
|----------------|--------------------------------|
| Listing Office | Royal LePage Lifestyles Realty |
|----------------|--------------------------------|

Data is supplied by Pillar 9â„¢ MLSÂ® System. Pillar 9â„¢ is the owner of the copyright in its MLSÂ® System. Data is deemed reliable but is not guaranteed accurate by Pillar 9â„¢. The trademarks MLSÂ®, Multiple Listing ServiceÂ® and the associated logos are owned by The Canadian Real Estate Association (CREA) and identify the quality of services provided by real estate professionals who are members of CREA. Used under license.