

\$209,900 - 10525 98 Avenue, Grande Cache

MLS® #A2175208

\$209,900

6 Bedroom, 2.00 Bathroom, 1,088 sqft
Residential on 0.20 Acres

NONE, Grande Cache, Alberta

Any investors out there looking for an Excellent revenue opportunity. This property comes with Separate entrance for a suite in the basement. At present it has 3 bedrooms, 3 piece bathroom and Kitchen. The main floor features 3 bedrooms, bathroom, kitchen, dining room and large living room. Single detached garage, with Party wall agreement in place. As the double is shared by the neighbouring owner. This property has some amazing views and a great back yard.

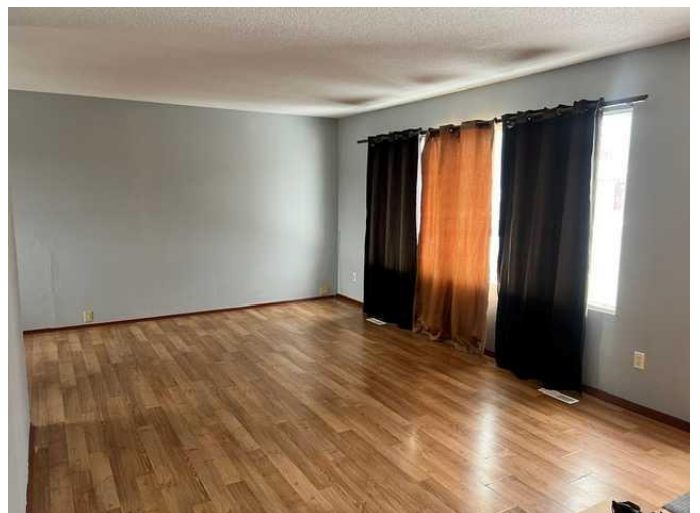
Built in 1969

Essential Information

MLS® #	A2175208
Price	\$209,900
Bedrooms	6
Bathrooms	2.00
Full Baths	2
Square Footage	1,088
Acres	0.20
Year Built	1969
Type	Residential
Sub-Type	Detached
Style	Bungalow
Status	Active

Community Information

Address	10525 98 Avenue
Subdivision	NONE



City	Grande Cache
County	Greenview No. 16, M.D. of
Province	Alberta
Postal Code	T0E 0Y0

Amenities

Parking Spaces	2
Parking	Off Street, Single Garage Detached
# of Garages	1

Interior

Interior Features	See Remarks, Separate Entrance
Appliances	Electric Stove, Refrigerator, Washer/Dryer
Heating	Forced Air
Cooling	None
Has Basement	Yes
Basement	Finished, Full

Exterior

Exterior Features	None
Lot Description	Back Lane, Back Yard, Front Yard, Views, Sloped Down
Roof	Asphalt Shingle
Construction	Concrete, Stucco, Wood Frame, Wood Siding
Foundation	Poured Concrete

Additional Information

Date Listed	October 24th, 2024
Days on Market	162
Zoning	R-1B

Listing Details

Listing Office	Maxwell Grande Realty
----------------	-----------------------

Data is supplied by Pillar 9â„¢ MLSÂ® System. Pillar 9â„¢ is the owner of the copyright in its MLSÂ® System. Data is deemed reliable but is not guaranteed accurate by Pillar 9â„¢. The trademarks MLSÂ®, Multiple Listing ServiceÂ® and the associated logos are owned by The Canadian Real Estate Association (CREA) and identify the quality of services provided by real estate professionals who are members of CREA. Used under license.