

# \$215,000 - 670 Center Street, Drumheller

---

MLS® #A2179461

**\$215,000**

0 Bedroom, 0.00 Bathroom,  
Land on 2.05 Acres

Cambria, Drumheller, Alberta

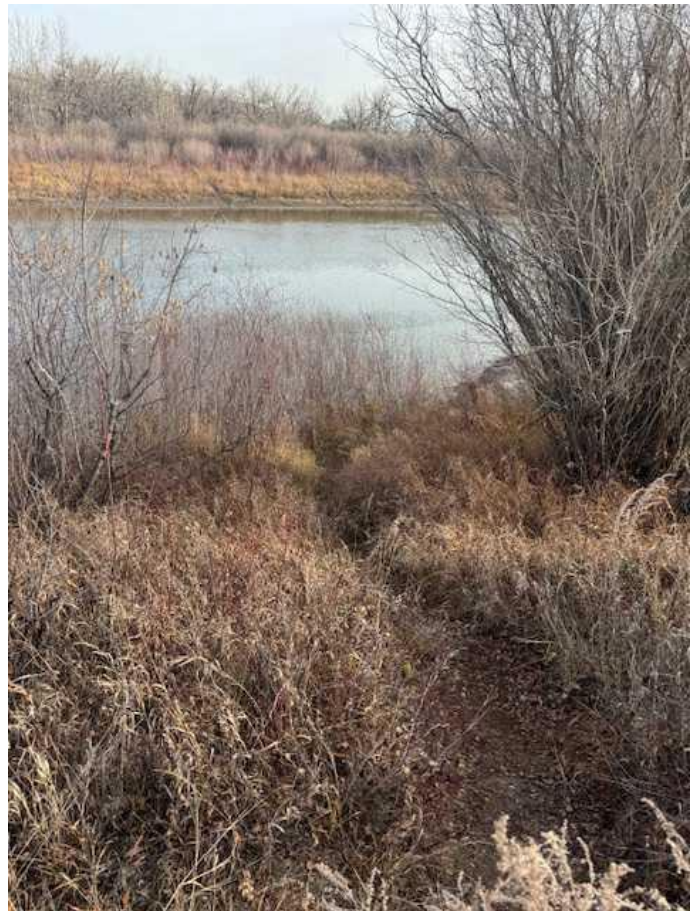
Rare opportunity to purchase river front property in the picturesque Dinosaur Valley. Only 15 minutes away from Drumheller downtown and 1:15 hour from Calgary City limits, this amazing piece of land is surrounded by beautiful views of the coulees and Hoodoos.

The opportunities for future development and profitable investment are definitely there with the neighborhood district zoning. You can choose to build your family dream home and build fun memories or subdivide and make a large profit.

Municipal water is right at the property line, and so gas and electrical. This entire community land is nested between 7 and 6 ave.

7 Avenue ends in a cul-de-sac and 6 Avenue takes you right to the river.

Another cool feature about this land is, it is part of an historical mining site with the sign on the edge of the property line.



## Essential Information

MLS® #	A2179461
Price	\$215,000
Bathrooms	0.00
Acres	2.05
Type	Land
Sub-Type	Residential Land
Status	Active

## Community Information

Address 670 Center Street  
Subdivision Cambria  
City Drumheller  
County Drumheller  
Province Alberta  
Postal Code T0J0Y9

## Amenities

Is Waterfront Yes  
Waterfront River Access, River Front, Se

## Exterior

Exterior Features Playground  
Lot Description Creek/River/Stream/Pond, S  
Lighting, Wetlands

## Additional Information

Date Listed November 15th, 2024  
Days on Market 142  
Zoning Neighborhood District

## Listing Details

Listing Office Real Estate Professionals Inc.

Data is supplied by Pillar 9â„¢ MLSÂ© System. Pillar 9â„¢ is the owner of the copyright in its MLSÂ© System. Data is deemed reliable but is not guaranteed accurate by Pillar 9â„¢. The trademarks MLSÂ©, Multiple Listing ServiceÂ© and the associated logos are owned by The Canadian Real Estate Association (CREA) and identify the quality of services provided by real estate professionals who are members of CREA. Used under license.

