

\$120,000 - 306 Railway W, Hanna

MLS® #A2180840

\$120,000

2 Bedroom, 1.00 Bathroom, 907 sqft

Residential on 0.14 Acres

Hanna, Hanna, Alberta

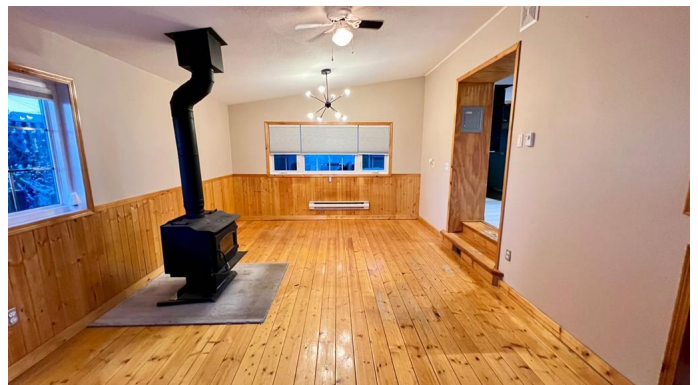
This charming home features 2 bedrooms, 1 bath. The master bedroom has a large walk-in closet/dressing room. Get cozy by the wood burning stove in this spacious living room. Convenient main floor laundry makes doing laundry a breeze. Step out the back porch to large garage perfect for the handyman complete with heated workshop, lots of extra outside storage. This property is located on the edge to town so take advantage of the fabulous view of the countryside to walk the dog, bird watch or just take a stroll along side the CN dam. Call your realtor today.

Built in 1940

Essential Information

MLS® #	A2180840
Price	\$120,000
Bedrooms	2
Bathrooms	1.00
Full Baths	1
Square Footage	907
Acres	0.14
Year Built	1940
Type	Residential
Sub-Type	Detached
Style	Bungalow
Status	Active

Community Information



Address	306 Railway W
Subdivision	Hanna
City	Hanna
County	Special Area 2
Province	Alberta
Postal Code	T0J 1P0

Amenities

Parking Spaces	2
Parking	Double Garage Detached, Workshop in Garage
# of Garages	1

Interior

Interior Features	See Remarks
Appliances	Dishwasher, Electric Stove, Refrigerator, Washer/Dryer, Microwave
Heating	Forced Air
Cooling	None
Fireplace	Yes
# of Fireplaces	1
Fireplaces	Great Room, Wood Burning Stove
Has Basement	Yes
Basement	Partial, Unfinished

Exterior

Exterior Features	Private Entrance, Private Yard
Lot Description	Private, Street Lighting
Roof	Metal
Construction	Wood Frame
Foundation	Poured Concrete

Additional Information

Date Listed	November 24th, 2024
Days on Market	145
Zoning	MD

Listing Details

Listing Office	Big Sky Real Estate Ltd.
----------------	--------------------------

Data is supplied by Pillar 9â„¢ MLS® System. Pillar 9â„¢ is the owner of the copyright in its MLS® System. Data is deemed reliable but is not guaranteed accurate by Pillar 9â„¢. The trademarks MLS®, Multiple Listing Service® and the associated logos are owned by The Canadian Real Estate Association (CREA) and identify the quality of services

provided by real estate professionals who are members of CREA. Used under license.