

\$254,900 - 1007 7 Avenue S, Lethbridge

MLS® #A2182141

\$254,900

2 Bedroom, 2.00 Bathroom, 640 sqft

Residential on 0.05 Acres

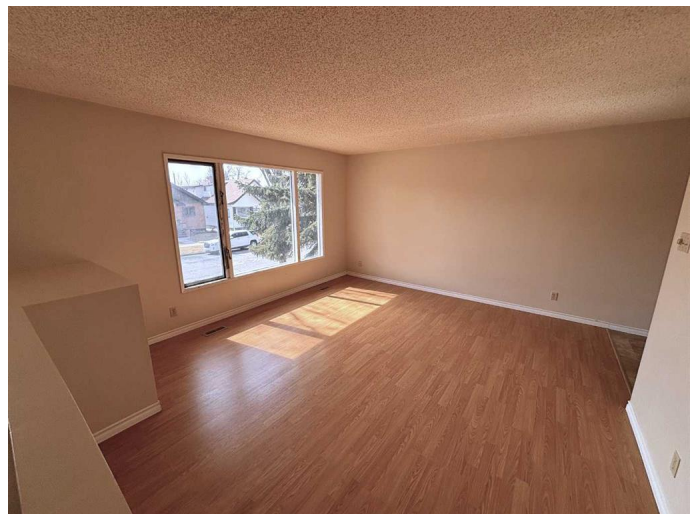
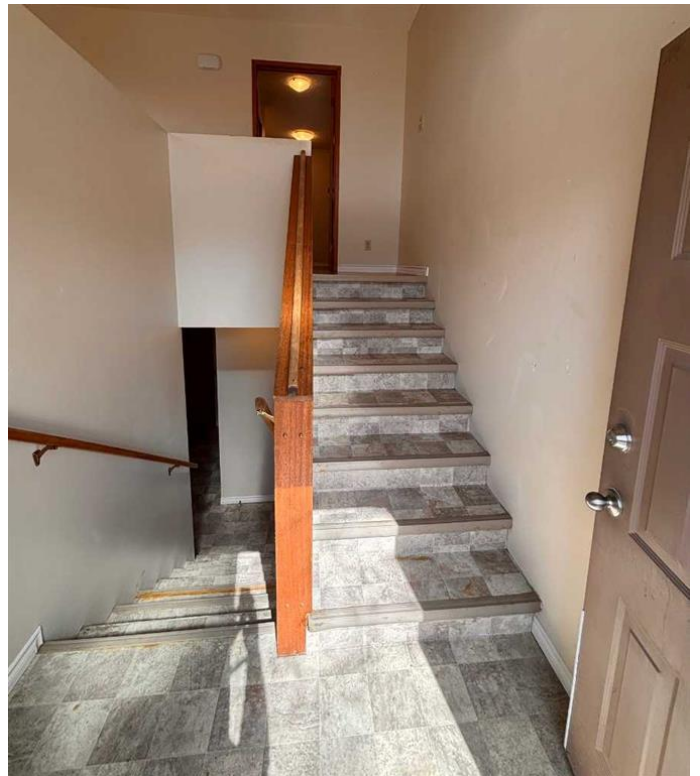
London Road, Lethbridge, Alberta

Affordable London Road home with great potential, that requires just a little T.L.C. This 640 sq. ft. Bi-level is situated in the heart of London Road and offers an exceptional opportunity for first-time home buyers or investors looking to add to their portfolio. This 2-bedroom, 2-bathroom home offers a spacious oak kitchen, large dining nook and main floor laundry. The basement hosts 2 bedrooms and a full 4-piece bath. Off the dining nook you'll find a north facing rear deck where you can enjoy warm summer evenings overlooking the back yard.

Built in 1982

Essential Information

MLS® #	A2182141
Price	\$254,900
Bedrooms	2
Bathrooms	2.00
Full Baths	1
Half Baths	1
Square Footage	640
Acres	0.05
Year Built	1982
Type	Residential
Sub-Type	Detached
Style	Bi-Level
Status	Active



Community Information

Address	1007 7 Avenue S
Subdivision	London Road
City	Lethbridge
County	Lethbridge
Province	Alberta
Postal Code	T1J 1K3

Amenities

Parking	None
---------	------

Interior

Interior Features	Storage, Wood Windows
Appliances	See Remarks
Heating	Forced Air
Cooling	None
Has Basement	Yes
Basement	Finished, Full

Exterior

Exterior Features	None
Lot Description	Landscaped, Interior Lot
Roof	Asphalt Shingle
Construction	Composite Siding, Concrete, Wood Frame
Foundation	Poured Concrete

Additional Information

Date Listed	April 2nd, 2025
Days on Market	16
Zoning	R-L (L)

Listing Details

Listing Office	RE/MAX REAL ESTATE - LETHBRIDGE
----------------	---------------------------------

Data is supplied by Pillar 9â„¢ MLS® System. Pillar 9â„¢ is the owner of the copyright in its MLS® System. Data is deemed reliable but is not guaranteed accurate by Pillar 9â„¢. The trademarks MLS®, Multiple Listing Service® and the associated logos are owned by The Canadian Real Estate Association (CREA) and identify the quality of services provided by real estate professionals who are members of CREA. Used under license.