

# \$781,740 - 27 Chelsea Pier Run, Chestermere

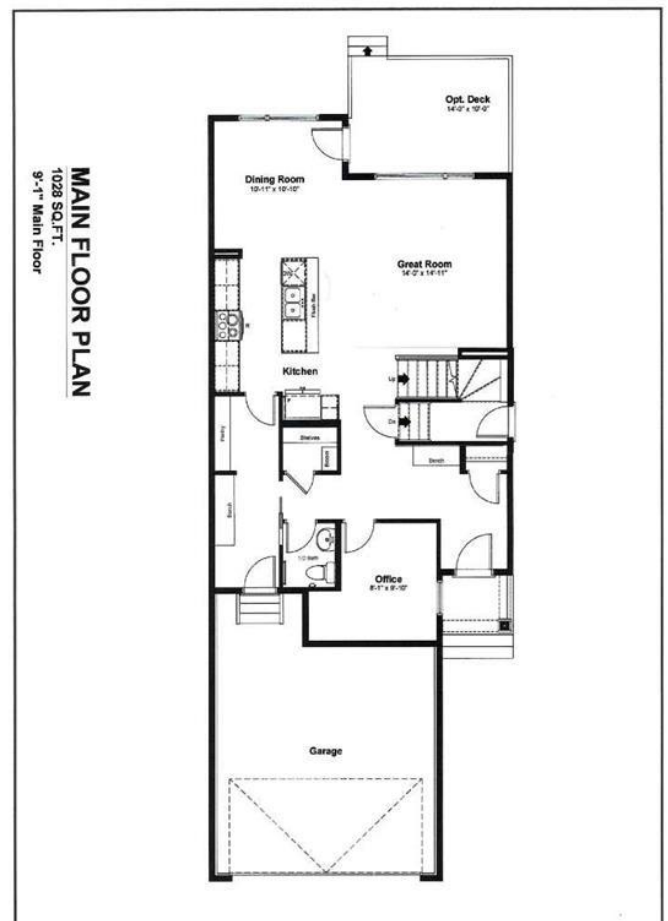
MLS® #A2191917

**\$781,740**

3 Bedroom, 3.00 Bathroom, 2,257 sqft  
Residential on 0.09 Acres

Chelsea\_CH, Chestermere, Alberta

Welcome to Chelsea front double garage, a stunning Front Drive (111 Model) home located in the highly sought-after community of Chelsea. With its charming Prairie elevation and modern features, this brand-new home offers both style and practicality. Key highlights include: Side entry for added convenience. 9'™ Basement Foundation with a stairwell side window and a welcoming front foyer. Upgraded Level 2 Kitchen, featuring a chimney hood fan, built-in microwave, ceiling-height cabinets with riser panels, extra pot and pan drawers, and a pullout garbage bin. As you step inside, you're greeted by an open layout that includes a versatile office/den space, which can be converted into a bedroom, along with the option of a full bathroom (standard 2-piece bathroom provided). The living area features large windows for ample natural light, a separate dining area, and a spacious kitchen equipped with sleek stainless steel appliances. Upstairs, the home offers 3 generously sized bedrooms, a bonus area, 2 full bathrooms, and a convenient laundry room. The primary bedroom boasts a luxurious 5-piece ensuite and a walk-in closet. The basement is ready for future development, complete with a private side entrance. This thoughtfully designed home is a perfect choice for families looking for comfort and modern living in a vibrant community.



Built in 2025

## Essential Information

|                |             |
|----------------|-------------|
| MLS® #         | A2191917    |
| Price          | \$781,740   |
| Bedrooms       | 3           |
| Bathrooms      | 3.00        |
| Full Baths     | 2           |
| Half Baths     | 1           |
| Square Footage | 2,257       |
| Acres          | 0.09        |
| Year Built     | 2025        |
| Type           | Residential |
| Sub-Type       | Detached    |
| Style          | 2 Storey    |
| Status         | Active      |

## Community Information

|             |                     |
|-------------|---------------------|
| Address     | 27 Chelsea Pier Run |
| Subdivision | Chelsea_CH          |
| City        | Chestermere         |
| County      | Chestermere         |
| Province    | Alberta             |
| Postal Code | A1A 1A1             |

## Amenities

|                |                                    |
|----------------|------------------------------------|
| Parking Spaces | 4                                  |
| Parking        | Double Garage Attached, Off Street |
| # of Garages   | 2                                  |

## Interior

|                   |  |
|-------------------|--|
| Interior Features | Bathroom Rough-in, Granite Counters, Kitchen Island, No Animal Home, No Smoking Home, Open Floorplan, Pantry, Separate Entrance, Vinyl Windows |
| Appliances        | Dishwasher, Dryer, Electric Stove, Range Hood, Refrigerator, Washer  |
| Heating           | Forced Air   |
| Cooling           | None   |
| Has Basement      | Yes  |
| Basement          | Exterior Entry, Full, Unfinished, Walk-Up To Grade   |

## Exterior

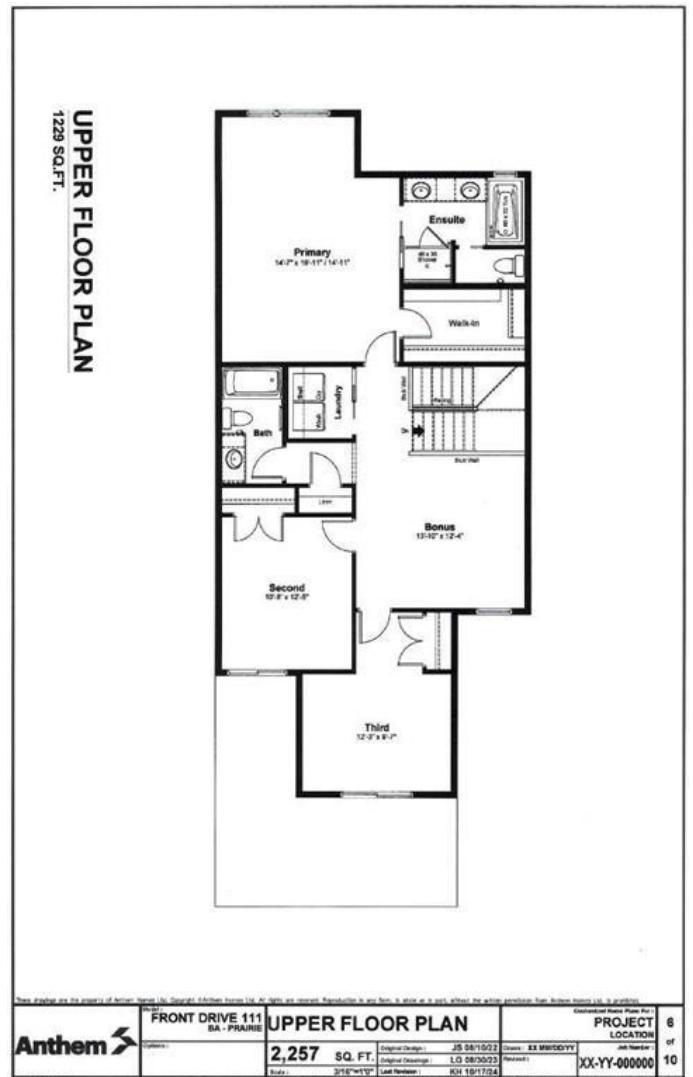
Exterior Features None  
 Lot Description Back Yard, Rectangular Lot  
 Roof Asphalt Shingle  
 Construction Vinyl Siding, Wood Siding  
 Foundation Poured Concrete

**Additional Information**

Date Listed February 2nd, 2025  
 Days on Market 60  
 Zoning TDB

**Listing Details**

Listing Office PREP Realty



Data is supplied by Pillar 9a,,ç MLSÂ® System. Pillar 9a,,ç is the owner of the copyright in its MLSÂ® System. Data is deemed reliable but is not guaranteed accurate by Pillar 9a,,ç. The trademarks MLSÂ®, Multiple Listing ServiceÂ® and the associated logos are owned by The Canadian Real Estate Association (CREA) and identify the quality of services provided by real estate professionals who are members of CREA. Used under license.