

# \$15 - 4412 Manilla Road Se, Calgary

MLS® #A2194116

**\$15**

0 Bedroom, 0.00 Bathroom,  
Commercial on 0.00 Acres

Manchester Industrial, Calgary, Alberta

Prime retail space available for lease in Manchester Industrial! This highly visible property features a modern exterior with new LED lighting and illuminated signage. Offering quick access to Blackfoot Trail, Macleod Trail, and Glenmore Trail, the location ensures excellent connectivity. The versatile layout can be customized to suit various retail businesses, providing a unique storefront opportunity. Plus, the landlord is open to buildout options, making it ideal for tenants looking to tailor the space to their needs.

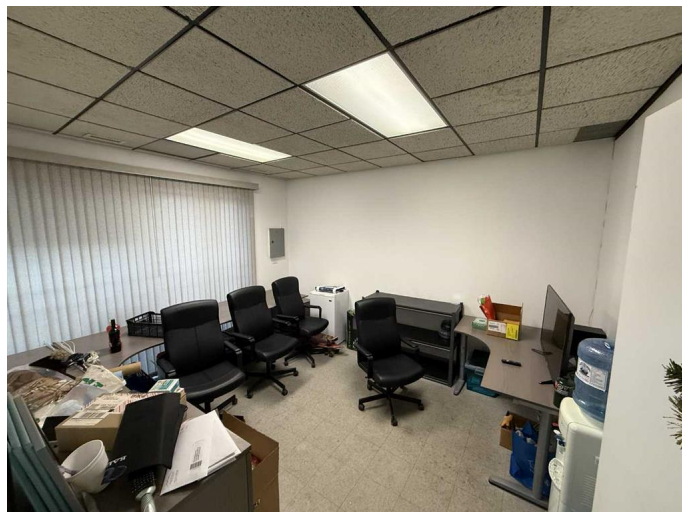
Built in 1979

## Essential Information

MLS® #	A2194116
Price	\$15
Bathrooms	0.00
Acres	0.00
Year Built	1979
Type	Commercial
Sub-Type	Retail
Status	Active

## Community Information

Address	4412 Manilla Road Se
Subdivision	Manchester Industrial
City	Calgary
County	Calgary
Province	Alberta



Postal Code T2G 4B7

### **Additional Information**

Date Listed February 11th, 2025

Days on Market 52

### **Listing Details**

Listing Office Royal LePage Solutions

Data is supplied by Pillar 9â,,ç MLSÂ® System. Pillar 9â,,ç is the owner of the copyright in its MLSÂ® System. Data is deemed reliable but is not guaranteed accurate by Pillar 9â,,ç. The trademarks MLSÂ®, Multiple Listing ServiceÂ® and the associated logos are owned by The Canadian Real Estate Association (CREA) and identify the quality of services provided by real estate professionals who are members of CREA. Used under license.