

\$179,900 - 10116 103 Avenue, Grande Prairie

MLS® #A2195552

\$179,900

3 Bedroom, 1.00 Bathroom, 565 sqft
Residential on 0.09 Acres

Avondale., Grande Prairie, Alberta

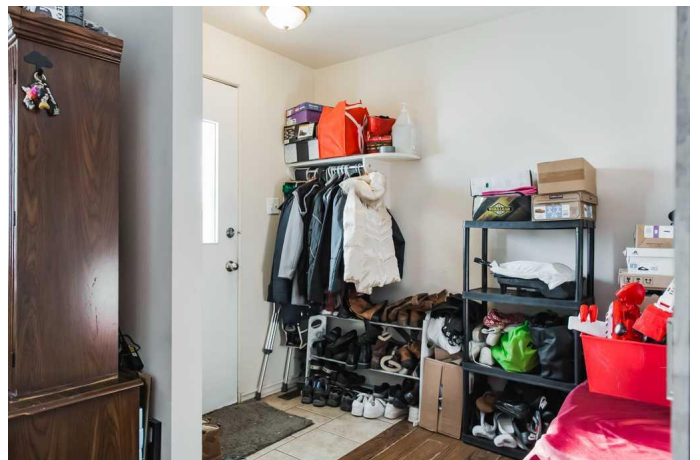
3 bed 1 bath half duplex on an RT zoned lot in Avondale with back alley access, the neighboring duplex 10118 is also for sale, own both, also a 4 plex is for sale next door as well(A2192141)! This basic duplex is currently rented month to month for \$1100 plus utilities so possession could be had in 3 calendar months! Laundry and utilities are all conveniently located on the main level as there is no basement. Yes they need some work but could be an excellent BRRR as they are the best-priced 1/2 duplexes in the market by over 40k!(buy-renovate-rent- refinance)!

Built in 1959

Essential Information

MLS® #	A2195552
Price	\$179,900
Bedrooms	3
Bathrooms	1.00
Full Baths	1
Square Footage	565
Acres	0.09
Year Built	1959
Type	Residential
Sub-Type	Semi Detached
Style	2 Storey, Side by Side
Status	Active

Community Information



Address	10116 103 Avenue
Subdivision	Avondale.
City	Grande Prairie
County	Grande Prairie
Province	Alberta
Postal Code	T8V 1c1

Amenities

Parking Spaces	2
Parking	Parking Pad

Interior

Interior Features	See Remarks
Appliances	Electric Stove, Refrigerator, Washer/Dryer
Heating	Forced Air, Natural Gas
Cooling	None
Basement	None

Exterior

Exterior Features	None
Lot Description	Back Lane
Roof	Asphalt Shingle
Construction	Wood Frame
Foundation	Other

Additional Information

Date Listed	February 18th, 2025
Days on Market	60
Zoning	rt

Listing Details

Listing Office	Sutton Group Grande Prairie Professionals
----------------	---

Data is supplied by Pillar 9â„¢ MLS® System. Pillar 9â„¢ is the owner of the copyright in its MLS® System. Data is deemed reliable but is not guaranteed accurate by Pillar 9â„¢. The trademarks MLS®, Multiple Listing Service® and the associated logos are owned by The Canadian Real Estate Association (CREA) and identify the quality of services provided by real estate professionals who are members of CREA. Used under license.