

\$350,000 - 6, 1520 23 Avenue N, Lethbridge

MLS® #A2196336

\$350,000

2 Bedroom, 3.00 Bathroom, 1,362 sqft
Residential on 1.54 Acres

Winston Churchill, Lethbridge, Alberta

Be prepared to be.... WOWED! Look at the photos, watch the virtual tour and ACT!

Seller will take TRADES (planes, train, automobiles) what do you have?

Built in 1976

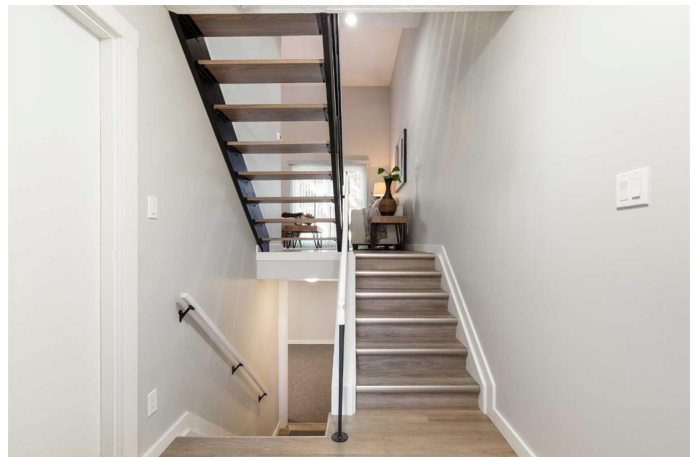
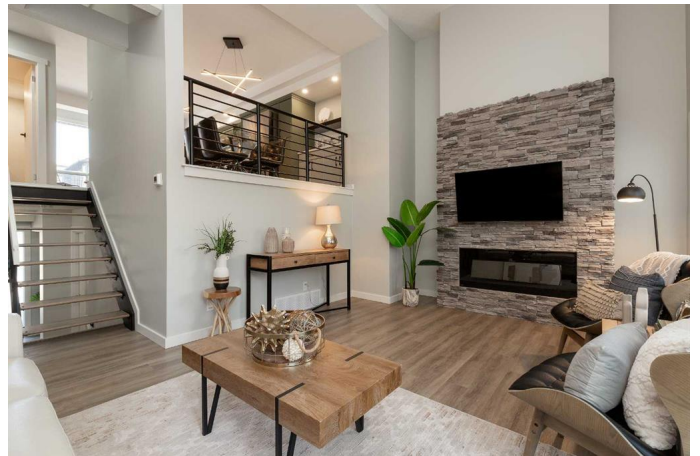
Essential Information

MLS® #	A2196336
Price	\$350,000
Bedrooms	2
Bathrooms	3.00
Full Baths	3
Square Footage	1,362
Acres	1.54
Year Built	1976
Type	Residential
Sub-Type	Row/Townhouse
Style	3 Storey
Status	Active

Community Information

Address	6, 1520 23 Avenue N
Subdivision	Winston Churchill
City	Lethbridge
County	Lethbridge
Province	Alberta
Postal Code	T1H 4X9

Amenities



Amenities	Visitor Parking
Parking Spaces	2
Parking	Single Garage Attached
# of Garages	1

Interior

Interior Features	Kitchen Island, Open Floorplan, Quartz Counters, See Remarks, Walk-In Closet(s)
Appliances	Central Air Conditioner, Dishwasher, Garage Control(s), Induction Cooktop, Microwave Hood Fan, Refrigerator, See Remarks, Washer/Dryer Stacked, Electric Oven
Heating	Forced Air
Cooling	Central Air
Fireplace	Yes
# of Fireplaces	1
Fireplaces	Electric
Has Basement	Yes
Basement	Finished, Partial

Exterior

Exterior Features	Playground
Lot Description	Backs on to Park/Green Space, Many Trees
Roof	Asphalt Shingle
Construction	Cedar
Foundation	Poured Concrete

Additional Information

Date Listed	February 28th, 2025
Days on Market	41
Zoning	R-50

Listing Details

Listing Office	Lethbridge Real Estate.com
----------------	----------------------------

Data is supplied by Pillar 9â„¢ MLSÂ® System. Pillar 9â„¢ is the owner of the copyright in its MLSÂ® System. Data is deemed reliable but is not guaranteed accurate by Pillar 9â„¢. The trademarks MLSÂ®, Multiple Listing ServiceÂ® and the associated logos are owned by The Canadian Real Estate Association (CREA) and identify the quality of services provided by real estate professionals who are members of CREA. Used under license.