

\$619,000 - 60 Castelani Crescent Se, Medicine Hat

MLS® #A2196338

\$619,000

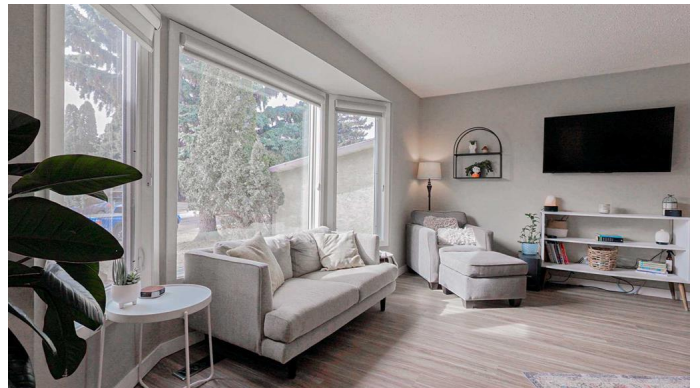
4 Bedroom, 3.00 Bathroom, 1,787 sqft

Residential on 0.25 Acres

Crestwood-Norwood, Medicine Hat, Alberta

Welcome Home! Step into this beautifully updated four-level home, offering nearly 1,800 sq ft of thoughtfully designed living space in a quiet, family-friendly neighborhood. With modern updates and functional design, this home is a perfect blend of comfort and style. The upper level features three spacious bedrooms, including a master suite with a generous walk-in closet. The bathroom, currently a peaceful retreat with a deep soaker tub, once functioned as both a main bath and a 2-piece ensuite, and the original plumbing remains in place—offering the option to easily convert it back to two separate bathrooms. The main floor underwent a full renovation a few years ago, bringing in fresh vinyl plank flooring and a contemporary kitchen with sleek stainless steel appliances. Whether you're cooking a family meal or entertaining guests, this bright and open space makes it effortless. The adjoining dining room leads to a large covered deck, seamlessly connecting indoor and outdoor living. On the lower level, a cozy family room with a fireplace invites you to relax, while garden doors open to a charming patio with a wood-burning fireplace—perfect for crisp evenings. This level also offers a convenient powder room and direct access to the attached double garage. The basement expands your living space with a games room, a three-piece bathroom, laundry area, and a large storage room—ensuring there's a place for everything.

Outside, the massive pie-shaped lot is a



private oasis, fully landscaped with mature perennials and multiple seating areas where you can unwind. For outdoor enthusiasts, this property features a drive-through RV parking space and a huge 26x28 heated, finished shop—ideal for projects, hobbies, or extra storage. The backyard is also wired and ready for a hot tub, making it easy to add your own spa-like retreat. This home is perfectly positioned between Crestwood and Ross Glen, offering easy access to walking paths, parks, and nearby coulees while still being minutes from schools, shopping, and everyday conveniences.

This stunning home is move-in ready and waiting for you! Book your showing today and make it yours!

Built in 1976

Essential Information

MLS® #	A2196338
Price	\$619,000
Bedrooms	4
Bathrooms	3.00
Full Baths	2
Half Baths	1
Square Footage	1,787
Acres	0.25
Year Built	1976
Type	Residential
Sub-Type	Detached
Style	4 Level Split
Status	Active

Community Information

Address	60 Castelani Crescent Se
Subdivision	Crestwood-Norwood
City	Medicine Hat

County	Medicine Hat
Province	Alberta
Postal Code	T1B1T1

Amenities

Parking Spaces	7
Parking	Double Garage Attached, Double Garage Detached, Driveway, Heated Garage, RV Access/Parking, Alley Access, Drive Through, RV Gated
# of Garages	4

Interior

Interior Features	Ceiling Fan(s), Closet Organizers, Quartz Counters, Soaking Tub, Walk-In Closet(s), Bathroom Rough-in
Appliances	Central Air Conditioner, Dishwasher, Freezer, Garage Control(s), Microwave Hood Fan, Refrigerator, Stove(s), Washer/Dryer Stacked, Window Coverings
Heating	Forced Air
Cooling	Central Air
Fireplace	Yes
# of Fireplaces	1
Fireplaces	Family Room, Wood Burning
Has Basement	Yes
Basement	Crawl Space, Finished, Full

Exterior

Exterior Features	Garden, Private Yard
Lot Description	Back Lane, Irregular Lot, Landscaped, Pie Shaped Lot, Secluded, Treed
Roof	Asphalt
Construction	Vinyl Siding, Wood Frame
Foundation	Poured Concrete

Additional Information

Date Listed	March 10th, 2025
Days on Market	4
Zoning	R-LD

Listing Details

Listing Office	ROYAL LEPAGE COMMUNITY REALTY
----------------	-------------------------------

Data is supplied by Pillar 9â„¢ MLSÂ® System. Pillar 9â„¢ is the owner of the copyright in its MLSÂ® System. Data is deemed reliable but is not guaranteed accurate by Pillar 9â„¢. The trademarks MLSÂ®, Multiple Listing ServiceÂ® and

the associated logos are owned by The Canadian Real Estate Association (CREA) and identify the quality of services provided by real estate professionals who are members of CREA. Used under license.