

# \$10 - 13, 8810 112 Street, Grande Prairie

MLS® #A2197058

**\$10**

0 Bedroom, 0.00 Bathroom,  
Commercial on 3.71 Acres

Richmond Industrial Park, Grande Prairie,  
Alberta

Affordable space for rent at \$10.00 PSF!!  
3384 Square feet Space consists mostly of a  
bay with over head door and a small office &  
bathroom. Overhead door is 12' wide x 16'  
high. This bay is 120' long!!!! Basic Rent is  
\$2,820.00 + \$141.00 = \$2,961.00. Additional  
Rent is \$4.00 PSF = \$1,128.00 + \$56.40 =  
\$1,184.40. Total Monthly Rent Payment  
including GST is \$4,145.40 plus utilities. The  
building exterior was updated a couple of  
years ago and has great street appeal!!!!

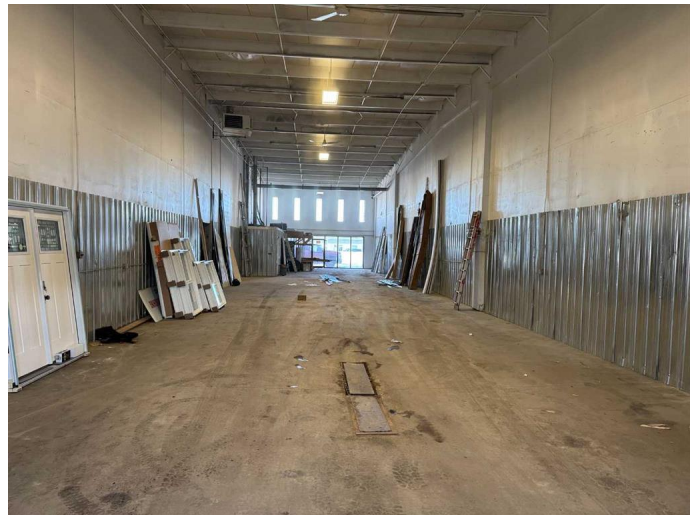
Built in 1981

## Essential Information

MLS® #	A2197058
Price	\$10
Bathrooms	0.00
Acres	3.71
Year Built	1981
Type	Commercial
Sub-Type	Industrial
Status	Active

## Community Information

Address	13, 8810 112 Street
Subdivision	Richmond Industrial Park
City	Grande Prairie
County	Grande Prairie
Province	Alberta



Postal Code T8V 5X4

### **Interior**

Heating Natural Gas

### **Exterior**

Roof Rubber

### **Additional Information**

Date Listed February 25th, 2025

Days on Market 39

Zoning IG

### **Listing Details**

Listing Office RE/MAX Grande Prairie

Data is supplied by Pillar 9â„¢ MLSÂ® System. Pillar 9â„¢ is the owner of the copyright in its MLSÂ® System. Data is deemed reliable but is not guaranteed accurate by Pillar 9â„¢. The trademarks MLSÂ®, Multiple Listing ServiceÂ® and the associated logos are owned by The Canadian Real Estate Association (CREA) and identify the quality of services provided by real estate professionals who are members of CREA. Used under license.