

# \$399,900 - 72338 Rge Rd 224, Rural Greenview No. 16, M.D. of

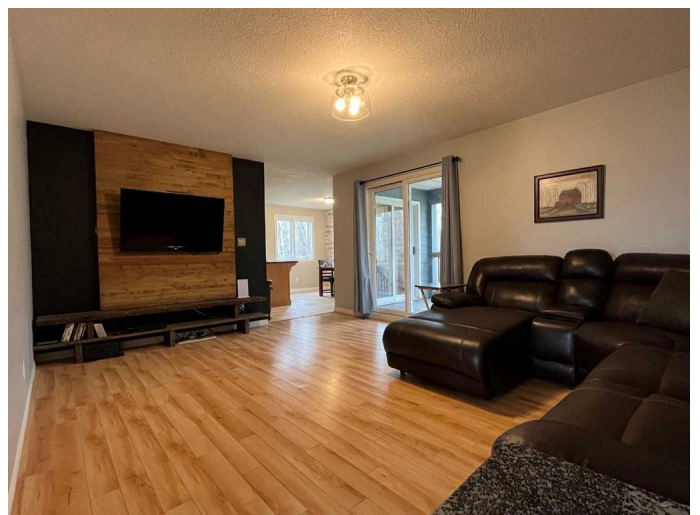
MLS® #A2199214

**\$399,900**

4 Bedroom, 3.00 Bathroom, 1,859 sqft  
Residential on 17.00 Acres

NONE, Rural Greenview No. 16, M.D. of, Alberta

Looking for a little peace and privacy? Maybe some space to raise a few animals? Want a spacious home but don't love stairs? If you said yes to all these, then this is probably the spot for you! Located 20 minutes north of Valleyview on 17 acres is this spacious ranch style home. Finished with 4 spacious bedrooms including the primary suite with dual closets and ensuite bathroom, two additional washrooms, 2 living room spaces and a large kitchen with adjoining dining, this home has plenty of space for the entire family without having to send someone to a dark cold basement. The house also has an attached garage and a beautiful covered rear deck. Outside there is a secondary 20x30 detached garage, perfect for your projects or additional storage. There is also a shelter that has been purposed as a barns and chicken house in recent years. The yard is divided up with approximately 12 acres of pasture land along the south boundary and the remaining 5 acres is a mix of lawn, garden and treed area along the north boundary of the property. You are sure to love the space carved in the trees for a firepit and the trails through the trees that look out towards the creek on the neighboring property. Located just a couple miles from crown land for the avid hunter or outdoorsman. This is truly a unique property so call your favorite Real Estate Professional and book a



viewing today!

Built in 1989

### Essential Information

|                |                                  |
|----------------|----------------------------------|
| MLS® #         | A2199214                         |
| Price          | \$399,900                        |
| Bedrooms       | 4                                |
| Bathrooms      | 3.00                             |
| Full Baths     | 2                                |
| Half Baths     | 1                                |
| Square Footage | 1,859                            |
| Acres          | 17.00                            |
| Year Built     | 1989                             |
| Type           | Residential                      |
| Sub-Type       | Detached                         |
| Style          | Acreage with Residence, Bungalow |
| Status         | Active                           |

### Community Information

|             |                                 |
|-------------|---------------------------------|
| Address     | 72338 Rge Rd 224                |
| Subdivision | NONE                            |
| City        | Rural Greenview No. 16, M.D. of |
| County      | Greenview No. 16, M.D. of       |
| Province    | Alberta                         |
| Postal Code | T0H 3N0                         |

### Amenities

|              |                                                |
|--------------|------------------------------------------------|
| Parking      | Double Garage Attached, Double Garage Detached |
| # of Garages | 3                                              |

### Interior

|                   |                                                   |
|-------------------|---------------------------------------------------|
| Interior Features | Breakfast Bar, Bookcases                          |
| Appliances        | Dishwasher, Dryer, Refrigerator, Stove(s), Washer |
| Heating           | Forced Air, Natural Gas, Wood Stove               |
| Cooling           | None                                              |
| Fireplace         | Yes                                               |
| # of Fireplaces   | 1                                                 |

|              |                   |
|--------------|-------------------|
| Fireplaces   | Wood Burning      |
| Has Basement | Yes               |
| Basement     | Crawl Space, None |

### **Exterior**

|                   |                                            |
|-------------------|--------------------------------------------|
| Exterior Features | Fire Pit, Garden, Private Yard             |
| Lot Description   | Garden, Many Trees, Native Plants, Private |
| Roof              | Metal                                      |
| Construction      | Wood Frame                                 |
| Foundation        | Poured Concrete, Perimeter Wall            |

### **Additional Information**

|                |                  |
|----------------|------------------|
| Date Listed    | March 10th, 2025 |
| Days on Market | 25               |
| Zoning         | A1               |

### **Listing Details**

|                |                                 |
|----------------|---------------------------------|
| Listing Office | Royal LePage - The Realty Group |
|----------------|---------------------------------|

Data is supplied by Pillar 9â„¢ MLSÂ® System. Pillar 9â„¢ is the owner of the copyright in its MLSÂ® System. Data is deemed reliable but is not guaranteed accurate by Pillar 9â„¢. The trademarks MLSÂ®, Multiple Listing ServiceÂ® and the associated logos are owned by The Canadian Real Estate Association (CREA) and identify the quality of services provided by real estate professionals who are members of CREA. Used under license.