

# \$549,888 - 144 Bridlewood Crescent Sw, Calgary

MLS® #A2199408

**\$549,888**

4 Bedroom, 2.00 Bathroom, 1,271 sqft  
Residential on 0.07 Acres

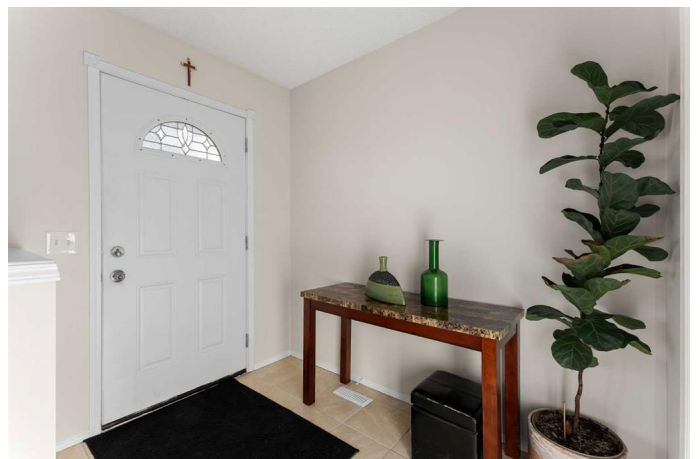
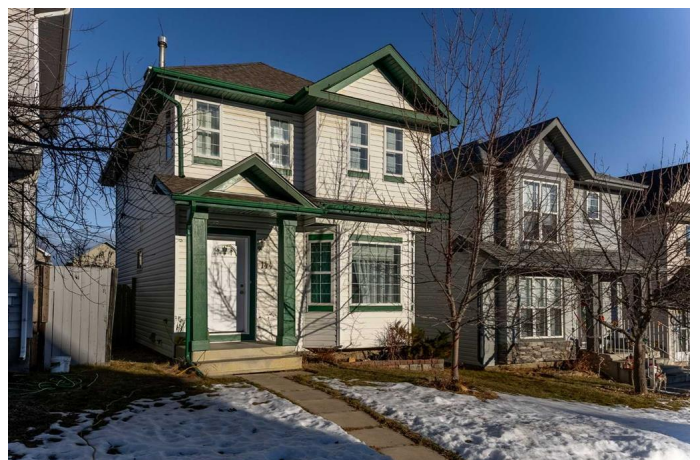
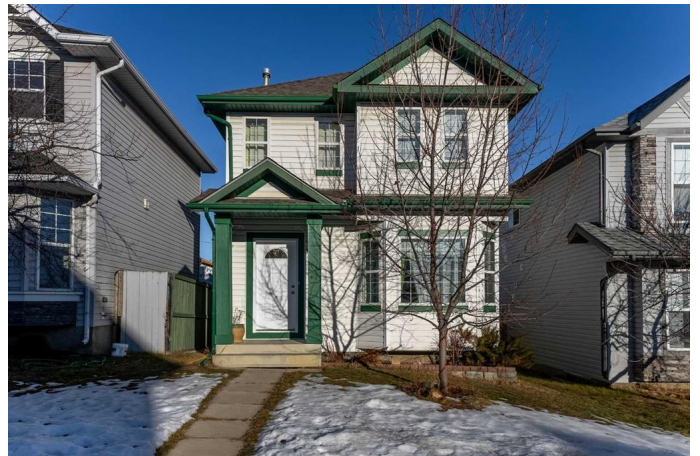
Bridlewood, Calgary, Alberta

Nestled in a quiet and family-friendly neighbourhood, this well-maintained home offers both comfort and convenience. The spacious backyard is an entertainer's dream, featuring a beautiful deck with a pergola and privacy wall—perfect for summer gatherings with family and friends.

Surrounded by many large parks and fields, the community is ideal for family outings and recreational activities, whether playing sports with friends or enjoying a day outdoors with the kids. Just five minutes away is the world-renowned Spruce Meadows, known for its equestrian events and magical Christmas market.

Commuting is a breeze with the Somerset/Bridlewood CTrain station only four minutes away by car or a 12-minute transit ride. Quick access to major roadways allows you to reach Stoney Trail in just two minutes and Macleod Trail in five. The community of Bridlewood provides easy and efficient access to the SW corner of Stoney Trail, making travel to the north and east sides of the city seamless. Heading west, you're a short drive away from Bragg Creek and Millarville, offering a gateway to nature and the mountains. For convenient shopping, Calgary's newest Costco is just five minutes away.

Inside, you'll find modern upgrades, including a brand-new water tank installed in July of last



year. The main-floor laundry with a washer and dryer provides added convenience, eliminating the need to carry loads up and down the stairs. The kitchen is equipped with sleek stainless steel appliances, making meal preparation a delight.

Don't miss the opportunity to own this fantastic home in a prime location with endless amenities!

Built in 1997

### Essential Information

MLS® #	A2199408
Price	\$549,888
Bedrooms	4
Bathrooms	2.00
Full Baths	1
Half Baths	1
Square Footage	1,271
Acres	0.07
Year Built	1997
Type	Residential
Sub-Type	Detached
Style	2 Storey
Status	Active

### Community Information

Address	144 Bridlewood Crescent Sw
Subdivision	Bridlewood
City	Calgary
County	Calgary
Province	Alberta
Postal Code	T2Y 3N2

### Amenities

Parking Spaces	2
Parking	Double Garage Detached

# of Garages 2

### **Interior**

Interior Features No Smoking Home, Vinyl Windows  
Appliances Dishwasher, Electric Range, Refrigerator, Washer/Dryer  
Heating Forced Air  
Cooling None  
Has Basement Yes  
Basement Finished, Full

### **Exterior**

Exterior Features Other  
Lot Description Back Lane, Back Yard, Rectangular Lot  
Roof Asphalt Shingle  
Construction Vinyl Siding  
Foundation Poured Concrete

### **Additional Information**

Date Listed March 5th, 2025  
Days on Market 9  
Zoning R-G

### **Listing Details**

Listing Office Real Broker

Data is supplied by Pillar 9â„¢ MLSÂ® System. Pillar 9â„¢ is the owner of the copyright in its MLSÂ® System. Data is deemed reliable but is not guaranteed accurate by Pillar 9â„¢. The trademarks MLSÂ®, Multiple Listing ServiceÂ® and the associated logos are owned by The Canadian Real Estate Association (CREA) and identify the quality of services provided by real estate professionals who are members of CREA. Used under license.