

# \$209,900 - 623 Centre Street, Brooks

MLS® #A2199947

## \$209,900

2 Bedroom, 1.00 Bathroom, 705 sqft  
Residential on 0.14 Acres

Central, Brooks, Alberta

HUGE PRIVATE WEST BACKYARD.  
BEAUTIFULLY RENOVATED. DETACHED  
Garage with long driveway for lots of extra  
parking. New electrical 100 Amp .service has  
just been installed. Nice curb appeal.

Built in 1948

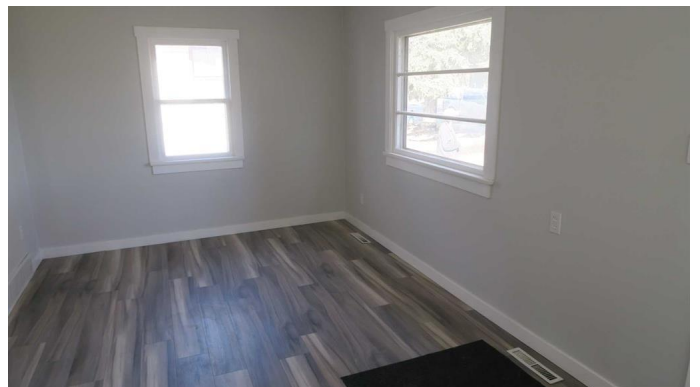
### Essential Information

MLS® #	A2199947
Price	\$209,900
Bedrooms	2
Bathrooms	1.00
Full Baths	1
Square Footage	705
Acres	0.14
Year Built	1948
Type	Residential
Sub-Type	Detached
Style	Bungalow
Status	Active

### Community Information

Address	623 Centre Street
Subdivision	Central
City	Brooks
County	Brooks
Province	Alberta
Postal Code	T1R 0M7

### Amenities



Parking Spaces	3
Parking	Front Drive, Garage Faces Front, Additional Parking, Driveway, On Street, Single Garage Detached
# of Garages	1

### **Interior**

Interior Features	See Remarks, Storage
Appliances	Dryer, Electric Stove, Refrigerator, Washer
Heating	Forced Air
Cooling	None
Has Basement	Yes
Basement	Exterior Entry, Unfinished, Partial

### **Exterior**

Exterior Features	Private Entrance, Private Yard, Storage
Lot Description	Back Lane, Back Yard, City Lot, Few Trees, Front Yard, Interior Lot, Landscaped, Lawn, Level, Private, Rectangular Lot, Street Lighting
Roof	Asphalt Shingle
Construction	Stucco
Foundation	Poured Concrete

### **Additional Information**

Date Listed	March 6th, 2025
Days on Market	27
Zoning	R-SD

### **Listing Details**

Listing Office	RE/MAX House of Real Estate
----------------	-----------------------------

Data is supplied by Pillar 9â„¸ MLSÂ® System. Pillar 9â„¸ is the owner of the copyright in its MLSÂ® System. Data is deemed reliable but is not guaranteed accurate by Pillar 9â„¸. The trademarks MLSÂ®, Multiple Listing ServiceÂ® and the associated logos are owned by The Canadian Real Estate Association (CREA) and identify the quality of services provided by real estate professionals who are members of CREA. Used under license.