

\$399,900 - Sw - 30-59-12 W5, Rural Woodlands County

MLS® #A2201443

\$399,900

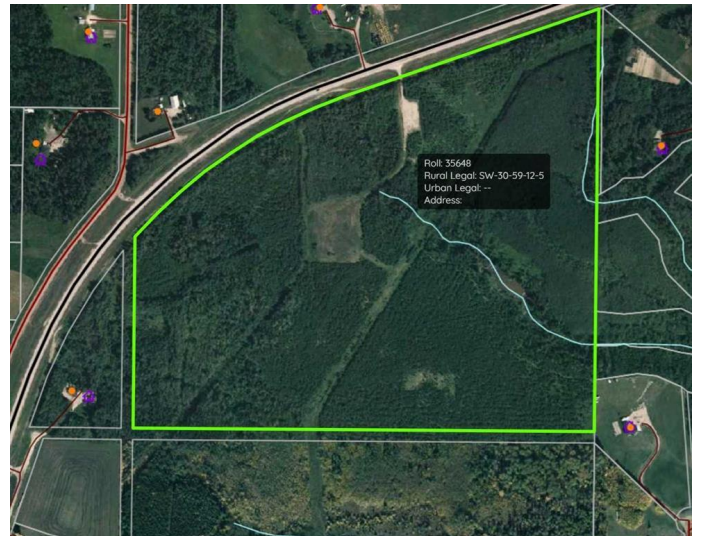
0 Bedroom, 0.00 Bathroom,
Land on 114.90 Acres

NONE, Rural Woodlands County, Alberta

114.90 Acres of Private, Treed Land Near
Whitecourt!

Just minutes from Whitecourt! Tucked away off the pavement, this stunning property is mostly treed, offering seclusion and a serene natural setting. A small clearing provides the ideal spot to build your dream home or getaway retreat.

Adding to its appeal, a creek runs onto the property, enhancing the beauty and tranquility of the land. Plus, you'll have the option to connect to town water in the future if desired. Whether you're looking for a recreational escape, a private homestead, or an investment in land, this property has endless possibilities!



Essential Information

MLS® #	A2201443
Price	\$399,900
Bathrooms	0.00
Acres	114.90
Type	Land
Sub-Type	Residential Land
Status	Active

Community Information

Address	Sw - 30-59-12 W5
Subdivision	NONE

City	Rural Woodlands County
County	Woodlands County
Province	Alberta
Postal Code	T7S 1N9

Additional Information

Date Listed	March 11th, 2025
Days on Market	24
Zoning	CR

Listing Details

Listing Office	RE/MAX ADVANTAGE (WHITECOURT)
----------------	-------------------------------

Data is supplied by Pillar 9â„¢ MLSÂ® System. Pillar 9â„¢ is the owner of the copyright in its MLSÂ® System. Data is deemed reliable but is not guaranteed accurate by Pillar 9â„¢. The trademarks MLSÂ®, Multiple Listing ServiceÂ® and the associated logos are owned by The Canadian Real Estate Association (CREA) and identify the quality of services provided by real estate professionals who are members of CREA. Used under license.