

# \$699,900 - 352 Quarry Park Boulevard Se, Calgary

MLS® #A2201470

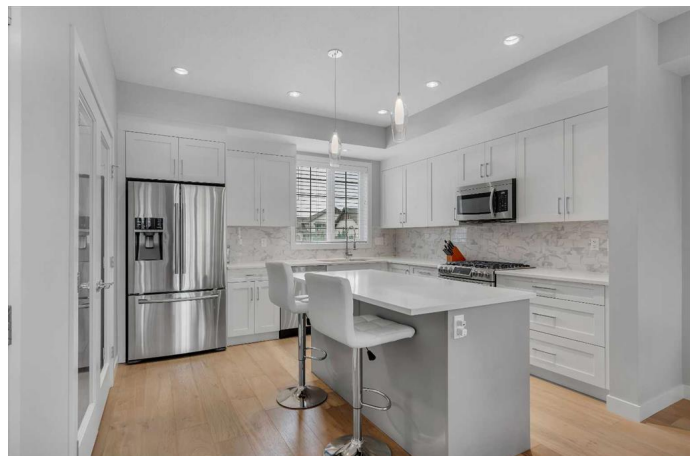
**\$699,900**

3 Bedroom, 3.00 Bathroom, 1,734 sqft  
Residential on 0.00 Acres

Douglasdale/Glen, Calgary, Alberta

\*\*\* OPEN HOUSE Sunday April 6th, 2-4pm\*\*\*

Welcome to The Gatestone in Quarry Park – a charming, luxury French-inspired townhome complex just minutes from the Bow River and its pathways. This stunning 3-bedroom corner end unit feels like new, offering high-end finishes and fantastic design throughout. With 9'™ ceilings, the home feels bright and open. The main floor features beautiful wide-plank engineered hardwood flooring, an expansive living room with oversized windows on two sides, a glass-enclosed office, a spacious dining area, and a gourmet kitchen equipped with quartz countertops, shaker-style cabinets, an undermount double sink, and an upgraded stainless steel appliance package—including a gas range and convection oven. A half bath completes this level. Upstairs, the primary bedroom is a true retreat, featuring a large walk-in closet and an ensuite with double sinks and an oversized shower. The upper level also includes a convenient laundry area, two additional generously sized bedrooms, and the main bathroom. The fully finished lower level, typically used for storage, has been transformed into a fantastic workout room (or a great recreation room). It also provides access to the finished double attached garage. Additional upgrades include air conditioning and hot water on demand. Nestled in the heart of Quarry Park, this home offers excellent access to Deerfoot and Glenmore Trails and is within walking distance to the Market at Quarry



Park - with its variety of businesses, shops and restaurants, the YMCA, Carburn Park, and the Sue Higgins off-leash area. Don't miss out on this exceptional, move-in-ready home-it won't last long!

Built in 2018

### Essential Information

MLS® #	A2201470
Price	\$699,900
Bedrooms	3
Bathrooms	3.00
Full Baths	2
Half Baths	1
Square Footage	1,734
Acres	0.00
Year Built	2018
Type	Residential
Sub-Type	Row/Townhouse
Style	2 Storey
Status	Active

### Community Information

Address	352 Quarry Park Boulevard Se
Subdivision	Douglasdale/Glen
City	Calgary
County	Calgary
Province	Alberta
Postal Code	T2C 5L4

### Amenities

Amenities	Parking
Parking Spaces	2
Parking	Double Garage Attached, Garage Faces Rear
# of Garages	2

### Interior

Interior Features	Breakfast Bar, High Ceilings, Kitchen Island, Open Floorplan, Pantry,
-------------------	---

	Quartz Counters, Storage, Walk-In Closet(s)
Appliances	Central Air Conditioner, Dishwasher, Dryer, Gas Stove, Microwave Hood Fan, Refrigerator, Washer
Heating	Forced Air
Cooling	Central Air
Has Basement	Yes
Basement	Finished, See Remarks

### **Exterior**

Exterior Features	Other
Lot Description	Landscaped, Lawn
Roof	Flat
Construction	Stone, Stucco, Wood Frame
Foundation	Poured Concrete

### **Additional Information**

Date Listed	March 13th, 2025
Days on Market	23
Zoning	DC
HOA Fees	300
HOA Fees Freq.	ANN

### **Listing Details**

Listing Office	RE/MAX Realty Professionals
----------------	-----------------------------

Data is supplied by Pillar 9â„¢ MLSÂ® System. Pillar 9â„¢ is the owner of the copyright in its MLSÂ® System. Data is deemed reliable but is not guaranteed accurate by Pillar 9â„¢. The trademarks MLSÂ®, Multiple Listing ServiceÂ® and the associated logos are owned by The Canadian Real Estate Association (CREA) and identify the quality of services provided by real estate professionals who are members of CREA. Used under license.