

# \$2,200,000 - 1 Highway 1, Strathmore

MLS® #A2202119

**\$2,200,000**

0 Bedroom, 0.00 Bathroom,  
Commercial on 0.00 Acres

NONE, Strathmore, Alberta

LOCATION....LOCATION.....this property  
borders Highway #1 on east side of  
Strathmore.....28 acres m/l..... zoned  
Highway Commercial

## Essential Information

MLS® #	A2202119
Price	\$2,200,000
Bathrooms	0.00
Acres	0.00
Type	Commercial
Sub-Type	Mixed Use
Status	Active

## Community Information

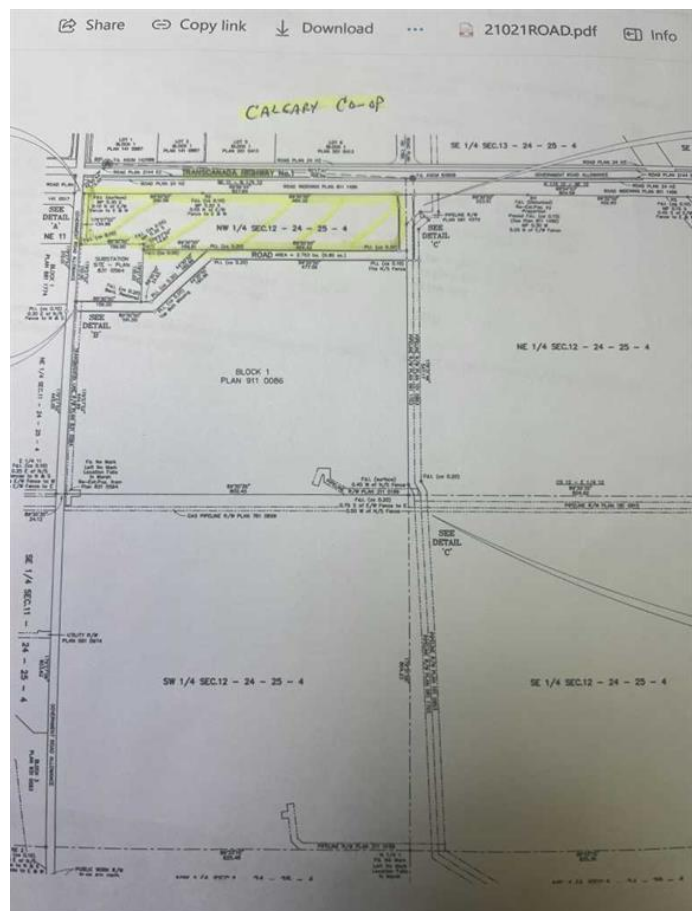
Address	1 Highway 1
Subdivision	NONE
City	Strathmore
County	Wheatland County
Province	Alberta
Postal Code	T1P 1K1

## Additional Information

Date Listed	March 11th, 2025
Days on Market	20
Zoning	H-CWY

## Listing Details

Listing Office	CIR Realty
----------------	------------



Data is supplied by Pillar 9â„¸ MLSÂ® System. Pillar 9â„¸ is the owner of the copyright in its MLSÂ® System. Data is deemed reliable but is not guaranteed accurate by Pillar 9â„¸. The trademarks MLSÂ®, Multiple Listing ServiceÂ® and the associated logos are owned by The Canadian Real Estate Association (CREA) and identify the quality of services provided by real estate professionals who are members of CREA. Used under license.