

\$205,000 - #5 Ovich Lane, Rural Athabasca County

MLS® #A2205103

\$205,000

0 Bedroom, 0.00 Bathroom,
Land on 6.80 Acres

Skeleton Lake, Rural Athabasca County,
Alberta

6.8 acre lot at Skeleton Lake, in Athabasca County. One of the newer subdivisions, Skeleton Lake Estates, offers walking distance to the lake, privacy, and nature close at hand. This large lot remains predominantly treed, with a clearing where the trailer, shed, and lake lifestyle await. There is even crown land off the north property line giving you extra wandering room. Property comes comes turnkey with 2017 Coachmen Chaparral RV, Side by Side, garden shed, and tranquility.

The Side by side is a 2012 wild cat 1000 that's sitting on a triton trailer. .

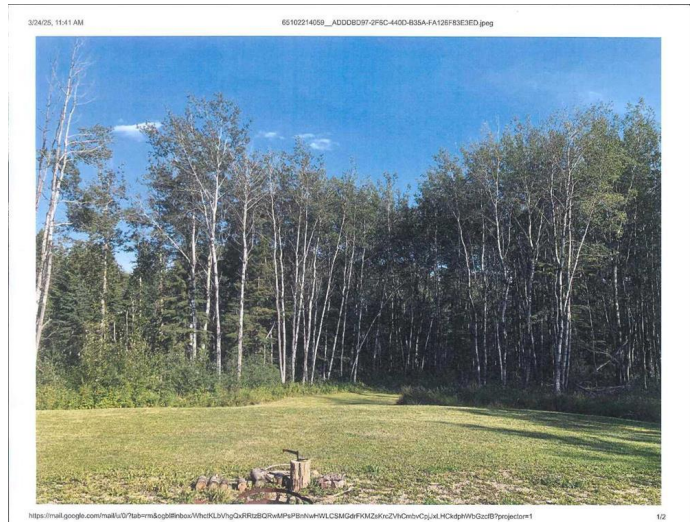
shed dimensions

Essential Information

| | |
|-----------|--------------|
| MLS® # | A2205103 |
| Price | \$205,000 |
| Bathrooms | 0.00 |
| Acres | 6.80 |
| Type | Land |
| Sub-Type | Recreational |
| Status | Active |

Community Information

| | |
|-------------|---------------|
| Address | #5 Ovich Lane |
| Subdivision | Skeleton Lake |



| | |
|-------------|------------------------|
| City | Rural Athabasca County |
| County | Athabasca County |
| Province | Alberta |
| Postal Code | T0A 0M0 |

Additional Information

| | |
|----------------|------------------|
| Date Listed | March 24th, 2025 |
| Days on Market | 17 |
| Zoning | CR |

Listing Details

| | |
|----------------|----------------------------|
| Listing Office | ROYAL LEPAGE COUNTY REALTY |
|----------------|----------------------------|

Data is supplied by Pillar 9â„¢ MLSÂ® System. Pillar 9â„¢ is the owner of the copyright in its MLSÂ® System. Data is deemed reliable but is not guaranteed accurate by Pillar 9â„¢. The trademarks MLSÂ®, Multiple Listing ServiceÂ® and the associated logos are owned by The Canadian Real Estate Association (CREA) and identify the quality of services provided by real estate professionals who are members of CREA. Used under license.