

\$144,900 - 203, 10615 88 Street, Grande Prairie

MLS® #A2205116

\$144,900

3 Bedroom, 2.00 Bathroom, 1,216 sqft

Mobile on 0.00 Acres

MH - Trumpeter Village, Grande Prairie, Alberta

Immediate possession possible on this great home in the well-kept community of â€˜Trumpeter Villageâ€™™!

Loads of natural light fills the home including from the kitchen skylight and one in the primary bedroom's ensuite.

Open floor plan & vaulted ceilings provide a wonderful feeling of spaciousness.

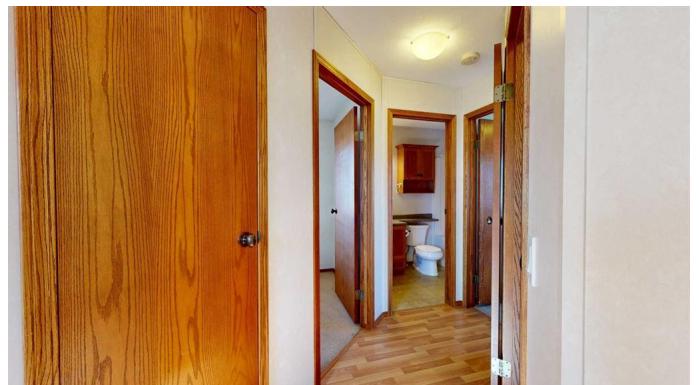
The kitchen has island, pantry with frosted door, dark/stainless steel appliances and lots of cabinets to tuck away all the essentials. Easy clean laminate flooring runs through the living room, hallway, kitchen & dining area. With summer just around the corner, handy patio doors by the dining room lead to large deck, where you can enjoy BBQs, sunshine and entertaining friends.

One end of the home has the 2nd bedroom with walk-in closet, full bathroom, 3rd bedroom and convenient storage closet off of front entry.

The opposite end has the primary bedroom with its ensuite & oval jetted tub, frosted window into bedroom interior, and walk-in closet.

Another nice touch is the corner shelving unit in the living room that will provide a good spot for loved ones photos, plants or treasures to proudly display.

Laundry has cabinets above the appliances plus discreet furnace area & open closet space by the side entrance. Outside there is a shed to store your tools, tires or whatever



items you'd prefer not to have inside.

Lot rent is \$583.50 per month and includes professional management & maintenance of the community, lighting in the Park, garbage pickup, snow removal, and driveway replacement & solving any drainage issues, if applicable.

A beautiful and carefully designed community with playgrounds, pond, walking trails and central location, Trumpeter Village is ideal for families of all ages.

With all the best urban conveniences paired with easy access to parks, lakes, ski hills and other recreation activities, residents at Trumpeter Village can enjoy all that Grande Prairie has to offer.

Contact a REALTOR today for more information or to view!

Built in 2007

Essential Information

MLS® #	A2205116
Price	\$144,900
Bedrooms	3
Bathrooms	2.00
Full Baths	2
Square Footage	1,216
Acres	0.00
Year Built	2007
Type	Mobile
Sub-Type	Mobile
Style	Single Wide Mobile Home
Status	Active

Community Information

Address	203, 10615 88 Street
Subdivision	MH - Trumpeter Village
City	Grande Prairie
County	Grande Prairie

Province	Alberta
Postal Code	T8V 1P5

Amenities

Utilities	Electricity Connected, Natural Gas Connected, Sewer Connected, Water Connected
Parking Spaces	2
Parking	Parking Pad

Interior

Interior Features	Built-in Features, Ceiling Fan(s), Kitchen Island, Open Floorplan, Pantry, Walk-In Closet(s), Jetted Tub, See Remarks, Skylight(s)
Appliances	Dishwasher, Dryer, Electric Stove, Refrigerator, Washer
Heating	Forced Air, Natural Gas

Exterior

Roof	Asphalt Shingle
Foundation	Piling(s)

Additional Information

Date Listed	March 26th, 2025
Days on Market	26

Listing Details

Listing Office	Royal LePage - The Realty Group
----------------	---------------------------------

Data is supplied by Pillar 9â„¢ MLS® System. Pillar 9â„¢ is the owner of the copyright in its MLS® System. Data is deemed reliable but is not guaranteed accurate by Pillar 9â„¢. The trademarks MLS®, Multiple Listing Service® and the associated logos are owned by The Canadian Real Estate Association (CREA) and identify the quality of services provided by real estate professionals who are members of CREA. Used under license.