

# \$78,000 - 18 1 Street W, Schuler

MLS® #A2205165

**\$78,000**

2 Bedroom, 1.00 Bathroom, 919 sqft

Residential on 0.14 Acres

NONE, Schuler, Alberta

Looking for a chance to live in a quiet community! Then why not check out Schuler Alberta? This quaint little 2 bedroom home has been fully renovated and ready to move into for that buyer looking to start out or an excellent revenue property! Call your realtor today and book your very own private viewing today

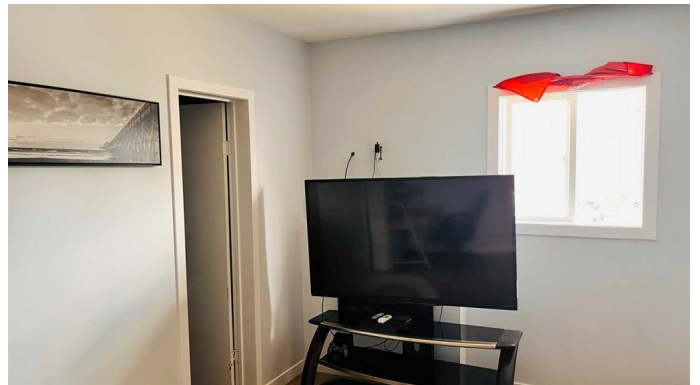
Built in 1928

## Essential Information

MLS® #	A2205165
Price	\$78,000
Bedrooms	2
Bathrooms	1.00
Full Baths	1
Square Footage	919
Acres	0.14
Year Built	1928
Type	Residential
Sub-Type	Detached
Style	Bungalow
Status	Active

## Community Information

Address	18 1 Street W
Subdivision	NONE
City	Schuler
County	Cypress County



Province	Alberta
Postal Code	T0J 3B0

### Amenities

Parking Spaces	2
Parking	Off Street, Parking Pad, On Street

### Interior

Interior Features	High Ceilings, Laminate Counters, Storage
Appliances	Dishwasher, Electric Oven, Range Hood, Refrigerator, Stove(s)
Heating	Electric, Fireplace(s), Radiant
Cooling	None
Fireplace	Yes
# of Fireplaces	2
Fireplaces	Blower Fan, Electric, Bedroom
Has Basement	Yes
Basement	Crawl Space, Partial

### Exterior

Exterior Features	Fire Pit
Lot Description	Back Lane, Back Yard, City Lot, Front Yard, Interior Lot, Lawn, Many Trees
Roof	Asphalt Shingle
Construction	Wood Frame, Wood Siding
Foundation	Poured Concrete

### Additional Information

Date Listed	March 24th, 2025
Days on Market	27
Zoning	Residential

### Listing Details

Listing Office	Real Estate Centre - Bow Island
----------------	---------------------------------

Data is supplied by Pillar 9â„¢ MLS® System. Pillar 9â„¢ is the owner of the copyright in its MLS® System. Data is deemed reliable but is not guaranteed accurate by Pillar 9â„¢. The trademarks MLS®, Multiple Listing Service® and the associated logos are owned by The Canadian Real Estate Association (CREA) and identify the quality of services provided by real estate professionals who are members of CREA. Used under license.