

# \$12 - C, 9022 108 Street, Grande Prairie

MLS® #A2205539

**\$12**

0 Bedroom, 0.00 Bathroom,  
Commercial on 0.00 Acres

Richmond Industrial Park, Grande Prairie,  
Alberta

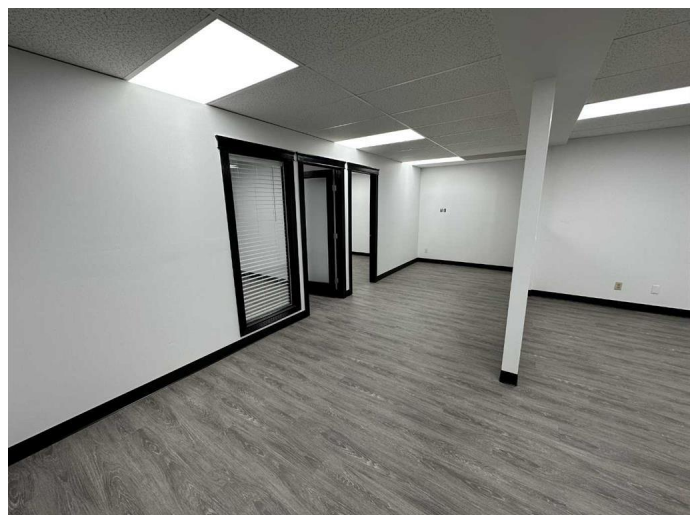
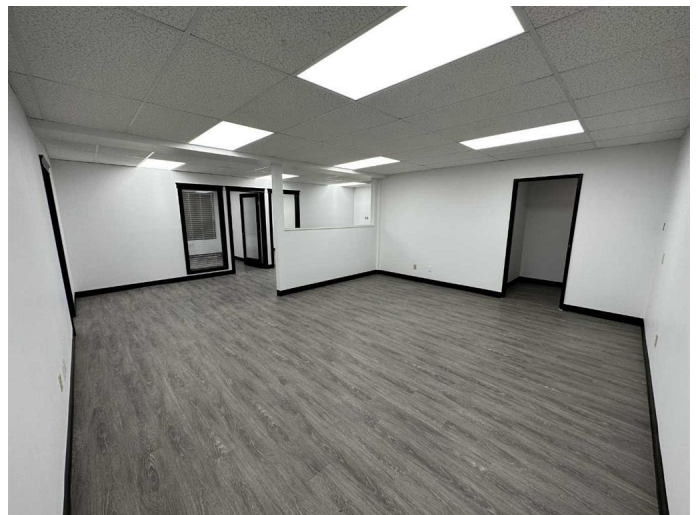
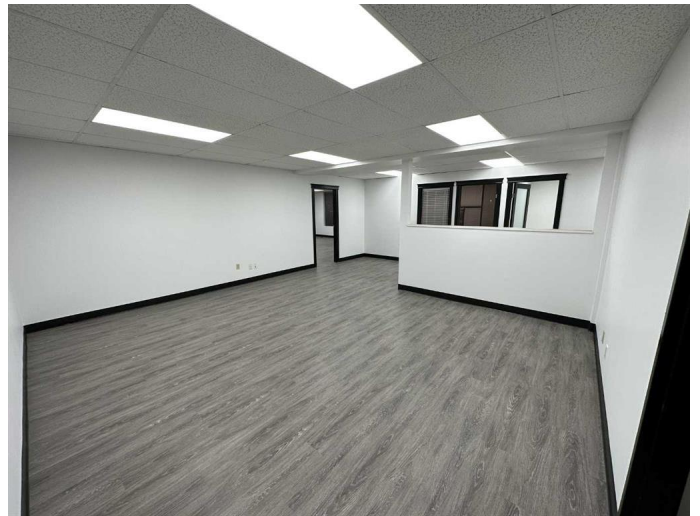
Discover the potential of your new location, a second-floor commercial building offering 1746 sqft of total space. Situated on a bustling main street, this property enjoys high visibility and a steady flow of foot traffic. Recently renovated with vinyl flooring, paint, & LED lights, & in unit air conditioning. Creating a welcoming and professional atmosphere. The building offers the convenience of two 2-piece common area restrooms, ensuring ease of access for both staff and customers. With its prime location and desirable features, this commercial space presents an excellent opportunity for various businesses and ventures. Whether you're starting a new venture or expanding an existing one, this property offers the ideal setting to make your mark.

Built in 1978

## Essential Information

MLS® #	A2205539
Price	\$12
Bathrooms	0.00
Acres	0.00
Year Built	1978
Type	Commercial
Sub-Type	Mixed Use
Status	Active

## Community Information



Address	C, 9022 108 Street
Subdivision	Richmond Industrial Park
City	Grande Prairie
County	Grande Prairie
Province	Alberta
Postal Code	T8V4C8

### **Interior**

Heating	Central, Natural Gas
Cooling	Central Air

### **Exterior**

Construction	Concrete, Aluminum Siding
--------------	---------------------------

### **Additional Information**

Date Listed	March 26th, 2025
Days on Market	12
Zoning	IG

### **Listing Details**

Listing Office	Royal LePage - The Realty Group
----------------	---------------------------------

Data is supplied by Pillar 9â„¢ MLSÂ® System. Pillar 9â„¢ is the owner of the copyright in its MLSÂ® System. Data is deemed reliable but is not guaranteed accurate by Pillar 9â„¢. The trademarks MLSÂ®, Multiple Listing ServiceÂ® and the associated logos are owned by The Canadian Real Estate Association (CREA) and identify the quality of services provided by real estate professionals who are members of CREA. Used under license.