

# \$499,000 - 408, 3339 Rideau Place Sw, Calgary

MLS® #A2206557

**\$499,000**

2 Bedroom, 1.00 Bathroom, 973 sqft  
Residential on 0.00 Acres

Rideau Park, Calgary, Alberta

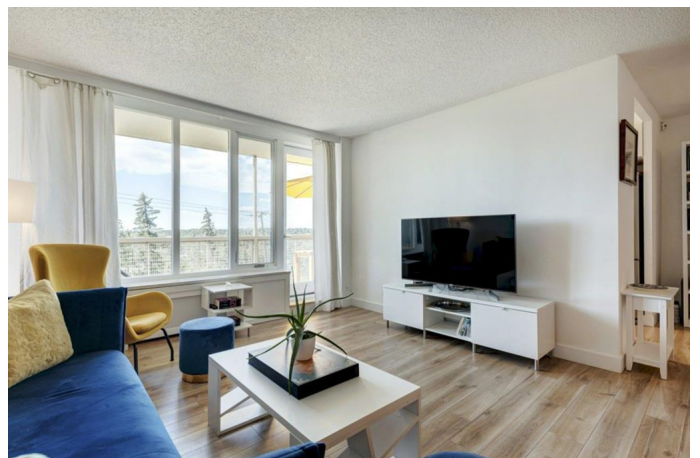
LIVE IN LUXURY at Devonshire House, one of the exclusive, coveted, iconic, international-style, mid-century complexes known as Rideau Towers. A truly high value home in a rare, exquisitely designed landmark building.

Stunning views of the mountains, green oasis and river below from the highly visible location atop the Elbow River escarpment. Awake to dazzling views of nature! trembling aspen, balsam poplar, lodge pole pine, white spruce trees, beautiful birds and animals such as deer from your 43â€™™ balcony while enjoying your morning coffee.

The DESIGNER RENOVATION of this 2 bedroom / 1 full bathroom condo on the fourth floor is exemplary. This home was completely re-created to include wide-plank laminate flooring, paint, galley kitchen with quartz counter tops, multi-glass backsplash, built-in bar, soft-close drawers and cabinets plus top quality upgraded stainless steel appliances and in-suite laundry (washer).

Gorgeous sunny south views from every window! A splendid open concept living / dining area excellent for entertaining family and friends.

For utmost convenience you will find built-in closet organizers in each of the grand bedrooms. A light and bright renovated



bathroom with gleaming tile floors, closet/storage, barn door, new vanity, toilet & bathtub. In-suite laundry with GE washer was modified to encompass more organizational storage, a sleek barn door and shoe closet. Newer window coverings and all new lighting â€“ did you notice the exquisite designer light fixture above the dining table?

Condo fees include heat, water and sewer services. There is an assigned storage locker for your exclusive use & the building even has additional common laundry facilities and plenty of parking space for visitors. Parking is also available on the street in the front and side of the building. It is rare to find a beautiful outdoor pool, vast park areas like Rideau Park, wild nature walking and bike paths, one of the best outdoor skating areas in the City, and a rustic, charming building nearby, the Historic Southern Alberta Pioneers Memorial Building.

A prime location in this sought-after inner city community, mere minutes to shopping & restaurants on 4th Street and 17th Avenue, Chinook Centre, Mission district and Stampede Park. Easy downtown access & so much more! See this fine gem before itâ€™s gone! Book your private viewing today!!

Built in 1955

### **Essential Information**

MLS® #	A2206557
Price	\$499,000
Bedrooms	2
Bathrooms	1.00
Full Baths	1
Square Footage	973
Acres	0.00
Year Built	1955
Type	Residential

Sub-Type	Apartment
Style	Single Level Unit
Status	Active

### **Community Information**

Address	408, 3339 Rideau Place Sw
Subdivision	Rideau Park
City	Calgary
County	Calgary
Province	Alberta
Postal Code	T2S 1Z5

### **Amenities**

Amenities	Elevator(s), Visitor Parking
Parking	Off Street
Has Pool	Yes

### **Interior**

Interior Features	No Animal Home, No Smoking Home, Open Floorplan, Vinyl Windows
Appliances	Dishwasher, Electric Stove, Microwave Hood Fan, Other, Refrigerator, Washer, Window Coverings
Heating	Baseboard, Boiler, Hot Water, Natural Gas
Cooling	None
# of Stories	6
Basement	None

### **Exterior**

Exterior Features	None
Roof	Rubber, Tar/Gravel
Construction	Brick, Concrete, Wood Siding
Foundation	Poured Concrete

### **Additional Information**

Date Listed	March 28th, 2025
Days on Market	9
Zoning	M-H2

### **Listing Details**

Listing Office	MaxWell Canyon Creek
----------------	----------------------

Data is supplied by Pillar 9â„¸ MLSÂ® System. Pillar 9â„¸ is the owner of the copyright in its MLSÂ® System. Data is deemed reliable but is not guaranteed accurate by Pillar 9â„¸. The trademarks MLSÂ®, Multiple Listing ServiceÂ® and the associated logos are owned by The Canadian Real Estate Association (CREA) and identify the quality of services provided by real estate professionals who are members of CREA. Used under license.