

\$245,000 - 664007 Range Road 214, Rural Athabasca County

MLS® #A2206660

\$245,000

2 Bedroom, 1.00 Bathroom, 1,106 sqft
Residential on 2.48 Acres

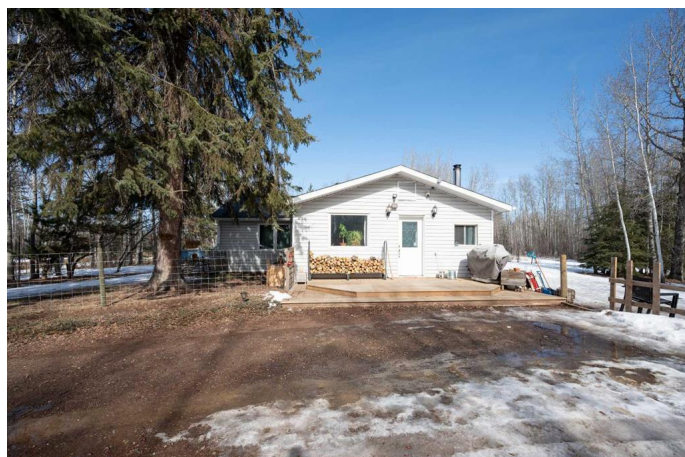
NONE, Rural Athabasca County, Alberta

Discover the perfect blend of country living and convenience with this affordable 2-bedroom, 1-bathroom home on 2.48 acres. Nestled just five minutes from town, this property offers the privacy and space you crave while keeping everyday amenities within easy reach. Inside, you'll find a bright and inviting living space with modern updates and plenty of natural light. The functional kitchen provides a user friendly layout and stainless steel appliances. The comfortable bedrooms make this home an ideal retreat. Outside, the fenced yard is perfect for pets, young children, gardening, or simply enjoying peaceful country views! Whether you're looking for a starter home, downsizing, or seeking an acreage lifestyle, this property is a must-see.

Built in 1958

Essential Information

MLS® #	A2206660
Price	\$245,000
Bedrooms	2
Bathrooms	1.00
Full Baths	1
Square Footage	1,106
Acres	2.48
Year Built	1958
Type	Residential



Sub-Type	Detached
Style	Acreage with Residence, Bungalow
Status	Active

Community Information

Address	664007 Range Road 214
Subdivision	NONE
City	Rural Athabasca County
County	Athabasca County
Province	Alberta
Postal Code	T9S 2A6

Amenities

Utilities	Electricity Connected, Sewer Connected, Water Connected, Propane
Parking Spaces	4
Parking	Gravel Driveway, Off Street

Interior

Interior Features	Kitchen Island, No Smoking Home
Appliances	Dishwasher, Dryer, Refrigerator, Stove(s), Washer, Window Coverings
Heating	Forced Air, Propane
Cooling	None
Fireplace	Yes
# of Fireplaces	2
Fireplaces	Living Room, Wood Burning, Entrance
Basement	None

Exterior

Exterior Features	Garden
Lot Description	Lawn, Many Trees
Roof	Asphalt
Construction	Wood Frame
Foundation	Other

Additional Information

Date Listed	April 2nd, 2025
Days on Market	19
Zoning	AU

Listing Details

Listing Office

ROYAL LEPAGE COUNTY REALTY

Data is supplied by Pillar 9â„¢ MLSÂ® System. Pillar 9â„¢ is the owner of the copyright in its MLSÂ® System. Data is deemed reliable but is not guaranteed accurate by Pillar 9â„¢. The trademarks MLSÂ®, Multiple Listing ServiceÂ® and the associated logos are owned by The Canadian Real Estate Association (CREA) and identify the quality of services provided by real estate professionals who are members of CREA. Used under license.