

\$658,250 - 20 Lewiston Drive Ne, Calgary

MLS® #A2206671

\$658,250

4 Bedroom, 3.00 Bathroom, 1,880 sqft
Residential on 0.06 Acres

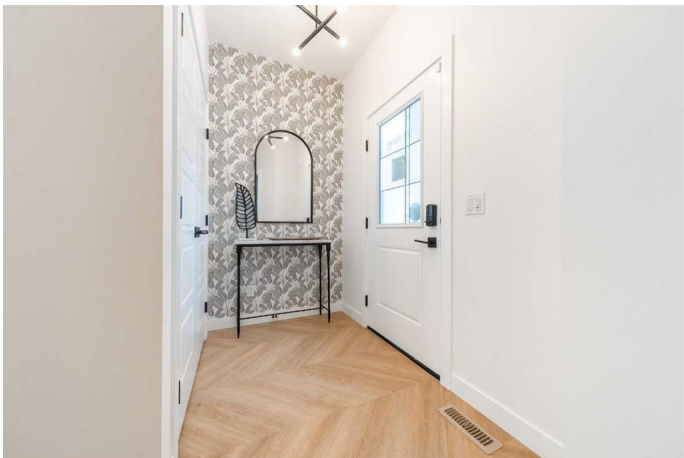
Lewisburg, Calgary, Alberta

Introducing the Jade – a beautifully designed 2-storey home with exceptional features! The chef-inspired kitchen comes complete with sleek stainless-steel appliances, a chimney hood fan, and a spice kitchen with a gas range. The main floor offers a full bath and a bedroom, while the basement boasts a 9' ceiling and a roughed-in 2-bedroom with a separate side entrance. The luxurious ensuite includes dual sinks, a fiberglass shower with tile surround, and a barn-style door. Enjoy quartz countertops throughout, paint-grade railings with iron spindles, a gas line for your BBQ, and back-alley access. The Jade is the perfect blend of function and elegance! Photos are a representative.

Built in 2024

Essential Information

MLS® #	A2206671
Price	\$658,250
Bedrooms	4
Bathrooms	3.00
Full Baths	3
Square Footage	1,880
Acres	0.06
Year Built	2024
Type	Residential
Sub-Type	Detached
Style	2 Storey



Status	Active
--------	--------

Community Information

Address	20 Lewiston Drive Ne
Subdivision	Lewisburg
City	Calgary
County	Calgary
Province	Alberta
Postal Code	T3P2J6

Amenities

Parking Spaces	4
Parking	Parking Pad

Interior

Interior Features	Double Vanity, Open Floorplan, Pantry, Separate Entrance, Vaulted Ceiling(s), Walk-In Closet(s), Smart Home, Tankless Hot Water
Appliances	Dishwasher, Gas Range, Microwave, Refrigerator, Electric Range, Range Hood, Tankless Water Heater
Heating	Forced Air, Natural Gas
Cooling	None
Has Basement	Yes
Basement	Full, Unfinished

Exterior

Exterior Features	None
Lot Description	Back Lane
Roof	Asphalt Shingle
Construction	Stone, Vinyl Siding, Wood Frame
Foundation	Poured Concrete

Additional Information

Date Listed	March 31st, 2025
Days on Market	21
Zoning	TBD

Listing Details

Listing Office	Bode Platform Inc.
----------------	--------------------

Data is supplied by Pillar 9â„¢ MLSÂ® System. Pillar 9â„¢ is the owner of the copyright in its MLSÂ® System. Data is deemed reliable but is not guaranteed accurate by Pillar 9â„¢. The trademarks MLSÂ®, Multiple Listing ServiceÂ® and

the associated logos are owned by The Canadian Real Estate Association (CREA) and identify the quality of services provided by real estate professionals who are members of CREA. Used under license.