

\$429,900 - 182 Everhollow Heights Sw, Calgary

MLS® #A2207089

\$429,900

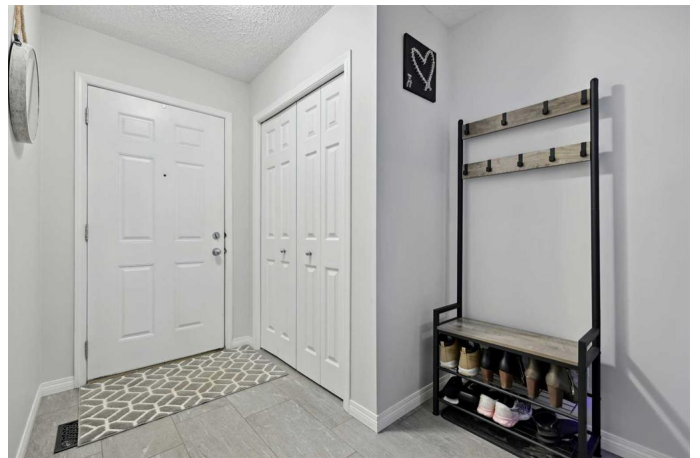
2 Bedroom, 3.00 Bathroom, 1,276 sqft
Residential on 0.43 Acres

Evergreen, Calgary, Alberta

Welcome to Ashton Green, in Evergreen â€” a bright, welcoming end-unit townhome in the heart of Evergreen, offering over 1,500 sqft of developed living space across four thoughtfully designed levels. This updated and beautifully maintained home is ideal for first-time buyers, downsizersâ€” anyone looking for low-maintenance comfort in a well-connected, family-friendly neighborhood.

The main living room is flooded with natural light thanks to large windows and high ceilings, and opens onto your private deck. Up a few steps, the kitchen and dining area provide a more than just a functional layout with updated lighting a bright dining space, and a convenient 2-piece bathroom that includes the convenient laundry with full-sized, updated washer and dryer. On the top level, youâ€™ll find two generously sized bedrooms, each with its own private ensuite. The finished basement adds flexibility â€” use it as a home gym, office, or movie space â€” and there's even great storage tucked under the stairs. This large end unit enjoys additional windows and more natural light throughout, so youâ€™ll also appreciate the custom blinds, along with all the modern touches, and the attached single-car garage.

Located in a quiet section of Evergreen, away from traffic, but close to everything â€” schools, parks, transit, and shopping are all nearby. Enjoy weekend walks or bike rides through Fish Creek Park, and benefit from easy access to Stoney Trail for quick



commutes around the city. This move-in-ready townhome is the perfect blend of space, style, and location.

Built in 2005

Essential Information

| | |
|----------------|---------------|
| MLS® # | A2207089 |
| Price | \$429,900 |
| Bedrooms | 2 |
| Bathrooms | 3.00 |
| Full Baths | 2 |
| Half Baths | 1 |
| Square Footage | 1,276 |
| Acres | 0.43 |
| Year Built | 2005 |
| Type | Residential |
| Sub-Type | Row/Townhouse |
| Style | 4 Level Split |
| Status | Active |

Community Information

| | |
|-------------|---------------------------|
| Address | 182 Everhollow Heights Sw |
| Subdivision | Evergreen |
| City | Calgary |
| County | Calgary |
| Province | Alberta |
| Postal Code | T2Y 5B3 |

Amenities

| | |
|----------------|--|
| Amenities | Other, Parking, Snow Removal |
| Parking Spaces | 2 |
| Parking | Driveway, Garage Door Opener, Concrete Driveway, Garage Faces Front, Owned, Single Garage Attached |
| # of Garages | 1 |

Interior

| | |
|-------------------|--|
| Interior Features | Built-in Features, Closet Organizers, High Ceilings, Laminate Counters, No Animal Home, No Smoking Home, See Remarks, Storage, Walk-In |
|-------------------|--|

| | |
|--------------|---|
| | Closet(s), Track Lighting |
| Appliances | Dishwasher, Electric Stove, Microwave, Refrigerator, Window Coverings |
| Heating | Central, Forced Air, Natural Gas |
| Cooling | None |
| Has Basement | Yes |
| Basement | Finished, Partial |

Exterior

| | |
|-------------------|---|
| Exterior Features | Other |
| Lot Description | Back Yard, Backs on to Park/Green Space, Few Trees, Landscaped, Lawn, See Remarks |
| Roof | Asphalt Shingle |
| Construction | Vinyl Siding |
| Foundation | Poured Concrete |

Additional Information

| | |
|----------------|-----------------|
| Date Listed | April 2nd, 2025 |
| Days on Market | 15 |
| Zoning | M-1 |

Listing Details

| | |
|----------------|------------------------|
| Listing Office | Greater Property Group |
|----------------|------------------------|

Data is supplied by Pillar 9â„¢ MLSÂ® System. Pillar 9â„¢ is the owner of the copyright in its MLSÂ® System. Data is deemed reliable but is not guaranteed accurate by Pillar 9â„¢. The trademarks MLSÂ®, Multiple Listing ServiceÂ® and the associated logos are owned by The Canadian Real Estate Association (CREA) and identify the quality of services provided by real estate professionals who are members of CREA. Used under license.