

\$299,500 - 6410 Poplar Drive, Grande Prairie

MLS® #A2208074

\$299,500

3 Bedroom, 3.00 Bathroom, 995 sqft
Residential on 0.14 Acres

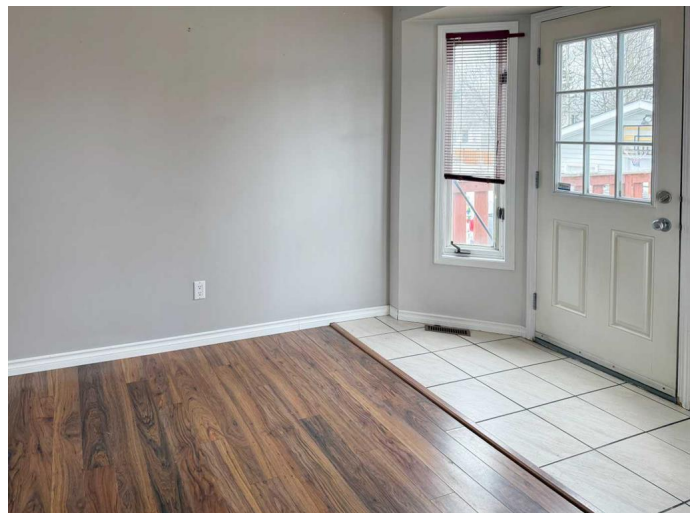
Country Club Estates., Grande Prairie, Alberta

Charming starter home in the desirable Country Club Estates! This home offers a warm and inviting main floor with a cozy living room, functional kitchen, and dining area. Just off the dining room, step outside to a beautifully treed backyard with plenty of privacy and a serene water fountain—your own peaceful retreat! The main level also includes a generously sized bedroom, a 3-piece bathroom, and a primary suite complete with a private 2-piece ensuite. Downstairs, you'll find a large family room, an additional bedroom, and another 3-piece bathroom, offering plenty of space for guests or a growing family. Don't miss out on this great opportunity—schedule your viewing today!

Built in 1987

Essential Information

| | |
|----------------|-------------|
| MLS® # | A2208074 |
| Price | \$299,500 |
| Bedrooms | 3 |
| Bathrooms | 3.00 |
| Full Baths | 2 |
| Half Baths | 1 |
| Square Footage | 995 |
| Acres | 0.14 |
| Year Built | 1987 |
| Type | Residential |



| | |
|----------|----------|
| Sub-Type | Detached |
| Style | Bi-Level |
| Status | Active |

Community Information

| | |
|-------------|-----------------------|
| Address | 6410 Poplar Drive |
| Subdivision | Country Club Estates. |
| City | Grande Prairie |
| County | Grande Prairie |
| Province | Alberta |
| Postal Code | T8W2G2 |

Amenities

| | |
|----------------|-------------|
| Parking Spaces | 4 |
| Parking | Parking Pad |

Interior

| | |
|-------------------|--|
| Interior Features | Open Floorplan, See Remarks |
| Appliances | Dishwasher, Refrigerator, Stove(s), Washer/Dryer, Window Coverings |
| Heating | Forced Air, Natural Gas |
| Cooling | None |
| Fireplace | Yes |
| # of Fireplaces | 1 |
| Fireplaces | Wood Burning Stove |
| Has Basement | Yes |
| Basement | Finished, Full |

Exterior

| | |
|-------------------|----------------------------------|
| Exterior Features | Other |
| Lot Description | Back Yard, Few Trees, Landscaped |
| Roof | Asphalt Shingle |
| Construction | Vinyl Siding |
| Foundation | Poured Concrete |

Additional Information

| | |
|----------------|-----------------|
| Date Listed | April 3rd, 2025 |
| Days on Market | 2 |
| Zoning | RG |

Listing Details

Listing Office

eXp Realty

Data is supplied by Pillar 9â„¸ MLSÂ® System. Pillar 9â„¸ is the owner of the copyright in its MLSÂ® System. Data is deemed reliable but is not guaranteed accurate by Pillar 9â„¸. The trademarks MLSÂ®, Multiple Listing ServiceÂ® and the associated logos are owned by The Canadian Real Estate Association (CREA) and identify the quality of services provided by real estate professionals who are members of CREA. Used under license.