

\$199,000 - 140 Mcardell Drive, Hinton

MLS® #A2211768

\$199,000

0 Bedroom, 0.00 Bathroom,
Land on 0.93 Acres

Thompson Lake, Hinton, Alberta

.93 Acres in town lot for Sale. Currently Zoned R-M2 allowing for variety of Multiple family dwellings. Great opportunity to build rental units in a very low vacancy rate town.

Essential Information

| | |
|-----------|------------------|
| MLS® # | A2211768 |
| Price | \$199,000 |
| Bathrooms | 0.00 |
| Acres | 0.93 |
| Type | Land |
| Sub-Type | Residential Land |
| Status | Active |

Community Information

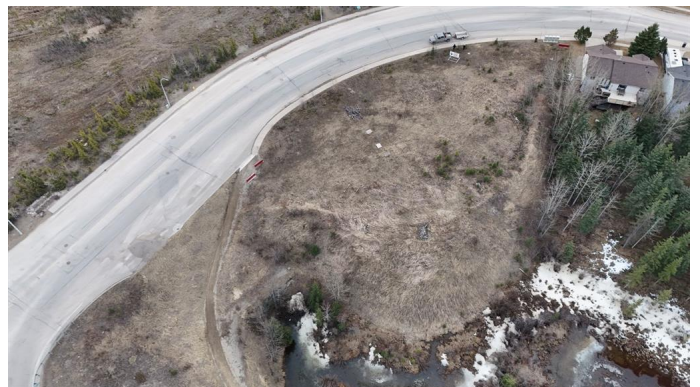
| | |
|-------------|--------------------|
| Address | 140 Mcardell Drive |
| Subdivision | Thompson Lake |
| City | Hinton |
| County | Yellowhead County |
| Province | Alberta |
| Postal Code | T7V 1Z2 |

Exterior

| | |
|-----------------|---------------------------------|
| Lot Description | Corner Lot, Near Public Transit |
|-----------------|---------------------------------|

Additional Information

| | |
|----------------|------------------|
| Date Listed | April 14th, 2025 |
| Days on Market | 4 |
| Zoning | R-M2 |



Listing Details

Listing Office RE/MAX 2000 REALTY

Data is supplied by Pillar 9â„¢ MLS® System. Pillar 9â„¢ is the owner of the copyright in its MLS® System. Data is deemed reliable but is not guaranteed accurate by Pillar 9â„¢. The trademarks MLS®, Multiple Listing Service® and the associated logos are owned by The Canadian Real Estate Association (CREA) and identify the quality of services provided by real estate professionals who are members of CREA. Used under license.