

# \$2,700 - 8641 62 Avenue, Grande Prairie

MLS® #A2212497

**\$2,700**

3 Bedroom, 3.00 Bathroom, 1,080 sqft

Rental on 0.00 Acres

Summerside., Grande Prairie, Alberta

3 bed 2.5 bath full house with theatre room in Summerside!

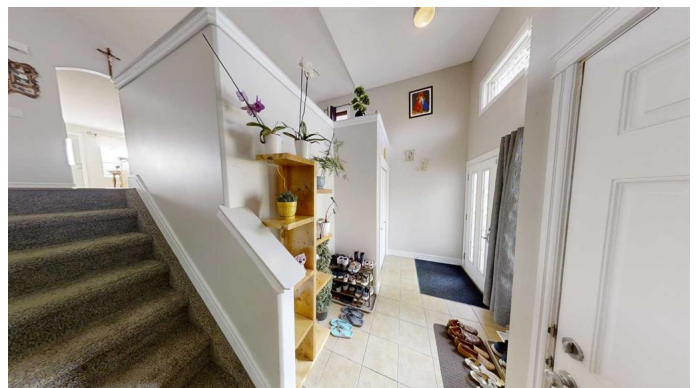
Main floor half bath by bedrooms and living room. Living room has lots of natural light and leads into the kitchen. Separate dining area with rear entrance and access to fenced back yard and rear deck. Kitchen has an eat up island and stainless steel appliances. Large primary upstairs with 2 piece ensuite bathroom. 2 other bedrooms and full bath are upstairs. Fully developed basement with large living room, storage area, theatre room/ office, and a full bathroom. Attached double garage, fully fenced back yard. Pets considered upon approval for \$50/mo

Application required prior to viewing.

## Essential Information

MLS® #	A2212497
Price	\$2,700
Bedrooms	3
Bathrooms	3.00
Full Baths	1
Half Baths	2
Square Footage	1,080
Acres	0.00
Type	Rental
Status	Active

## Community Information



Address	8641 62 Avenue
Subdivision	Summerside.
City	Grande Prairie
County	Grande Prairie
Province	Alberta
Postal Code	T8W2X2

### **Amenities**

Parking	Double Garage Attached
---------	------------------------

### **Interior**

Appliances	Dishwasher, Oven, Range Hood, Refrigerator, Stove(s), Washer/Dryer
------------	--

### **Exterior**

Roof	Asphalt Shingle
------	-----------------

### **Additional Information**

Date Listed	April 16th, 2025
-------------	------------------

Days on Market	4
----------------	---

### **Listing Details**

Listing Office	Grassroots Realty Group Ltd.
----------------	------------------------------

Data is supplied by Pillar 9â„¢ MLSÂ® System. Pillar 9â„¢ is the owner of the copyright in its MLSÂ® System. Data is deemed reliable but is not guaranteed accurate by Pillar 9â„¢. The trademarks MLSÂ®, Multiple Listing ServiceÂ® and the associated logos are owned by The Canadian Real Estate Association (CREA) and identify the quality of services provided by real estate professionals who are members of CREA. Used under license.