

# \$139,000 - 14 Pine Coulee Ranch Sw, Stavely

---

MLS® #A2212512

**\$139,000**

0 Bedroom, 0.00 Bathroom,  
Land on 0.41 Acres

NONE, Stavely, Alberta

WOW! Looking to build your dream home in the country or a week-end retreat! Pine Coulee Ranch Estates ! Do you appreciate Mountain Views and Privacy is a priority, easy access to paved road is a must. Across from Pine Coulee Reservoir- 4.25 Acre parcel is located 10 miles SW of Nanton on Hwy 533 and approx. 1 mile West on Township Road 154. The Views are spectacular in all directions. Take a Drive and enjoy this beautiful community! Minutes to Stavely, 1 Hr to Calgary and 1 hr to Lethbridge. The lake is surrounded by farmland and ranch land. It is very popular with fishermen. The lake is also popular with water skiers, especially at the south end of the lake where it is the widest. Pine Coulee Reservoir is approximately 15min from Stavely. Take HWY 527 to Township Road 140. The average WATER depth is 15-25 feet, with a maximum depth of 35 feet. Great for Swimming, Boating + a Famous Fishing spot. Great opportunity and Value!



## Essential Information

MLS® #	A2212512
Price	\$139,000
Bathrooms	0.00
Acres	0.41
Type	Land
Sub-Type	Residential Land
Status	Active

Community Information

Address	14 Pine Coulee Ranch Sw
Subdivision	NONE
City	Stavely
County	Willow Creek No. 26, M.D. of
Province	Alberta
Postal Code	T0L 0T0

Amenities

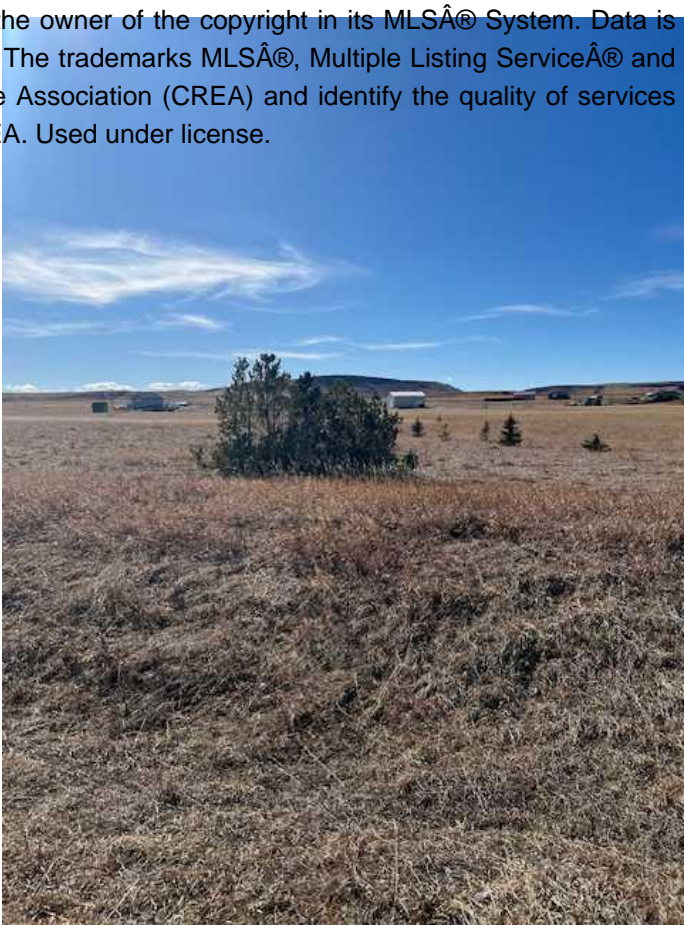
Amenities	Boating, Park, Picnic Area
-----------	----------------------------

Additional Information

Date Listed	April 18th, 2025
Days on Market	3
Zoning	R0

Listing Details

Listing Office	Royal LePage Benchmark
----------------	------------------------



Data is supplied by Pillar 9â„¢ MLSÂ® System. Pillar 9â„¢ is the owner of the copyright in its MLSÂ® System. Data is deemed reliable but is not guaranteed accurate by Pillar 9â„¢. The trademarks MLSÂ®, Multiple Listing ServiceÂ® and the associated logos are owned by The Canadian Real Estate Association (CREA) and identify the quality of services provided by real estate professionals who are members of CREA. Used under license.