

\$175,000 - 227, 21 Berkeley Place W, Lethbridge

MLS® #A2214109

\$175,000

2 Bedroom, 1.00 Bathroom, 949 sqft

Residential on 1.57 Acres

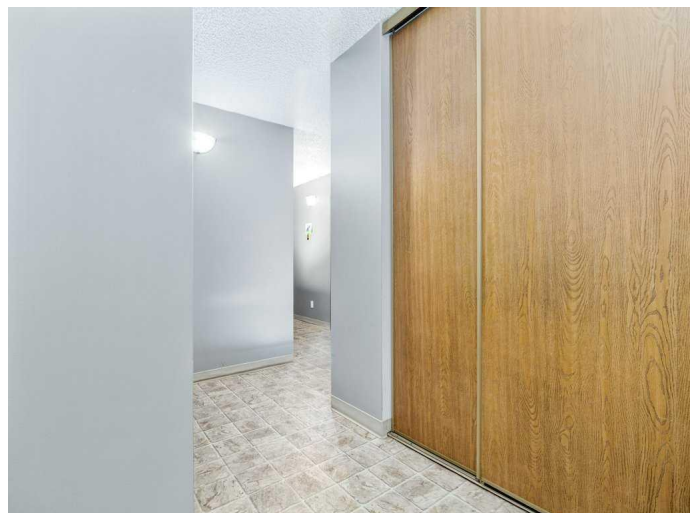
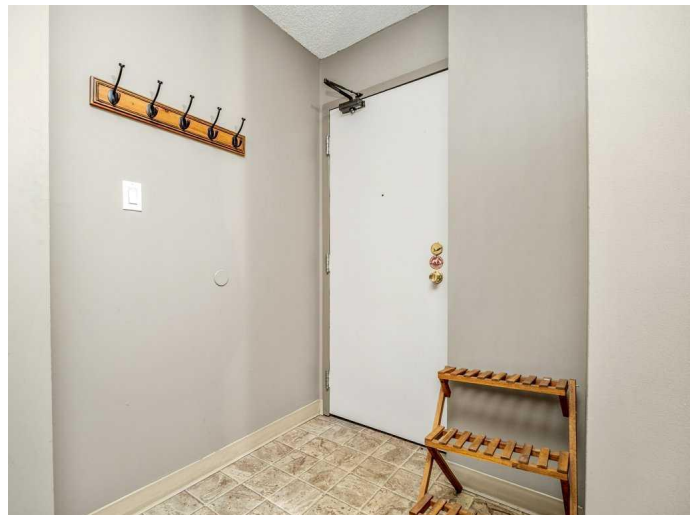
Varsity Village, Lethbridge, Alberta

Welcome to Madison Heights—an excellent opportunity for students, first-time buyers, or savvy investors seeking a well-located two-bedroom, one-bathroom condo directly across from the University of Lethbridge. This bright and airy corner unit benefits from an east-facing exposure, flooding the space with natural light. Inside, you'll find updated vinyl plank flooring, fresh paint, and a modernized bathroom. Located on the second floor, the private balcony showcases scenic views of the university and city skyline. Madison Heights is a professionally managed, well-maintained building featuring a resident caretaker, two elevators, assigned parking, and coin-operated laundry facilities. With its unbeatable proximity to the university, public transit at the doorstep, and all essential amenities nearby, this unit offers strong rental potential and long-term value for investors—while also being an excellent place to call home for buyers seeking comfort and convenience. This unit is TRULY A MUST SEE!!

Built in 1982

Essential Information

MLS® #	A2214109
Price	\$175,000
Bedrooms	2
Bathrooms	1.00



Full Baths	1
Square Footage	949
Acres	1.57
Year Built	1982
Type	Residential
Sub-Type	Apartment
Style	Single Level Unit
Status	Active

Community Information

Address	227, 21 Berkeley Place W
Subdivision	Varsity Village
City	Lethbridge
County	Lethbridge
Province	Alberta
Postal Code	T1K 5N1

Amenities

Amenities	Coin Laundry, Elevator(s), Parking, Garbage Chute
Parking Spaces	1
Parking	Stall

Interior

Interior Features	Laminate Counters, No Smoking Home
Appliances	Dishwasher, Electric Stove, Microwave, Range Hood, Refrigerator, Window Coverings
Heating	Baseboard
Cooling	None
# of Stories	9

Exterior

Exterior Features	Balcony
Roof	Flat Torch Membrane
Construction	Concrete, Stucco

Additional Information

Date Listed	April 23rd, 2025
Days on Market	4
Zoning	R-150

Listing Details

Listing Office Royal LePage Benchmark

Data is supplied by Pillar 9â,,ç MLSÂ® System. Pillar 9â,,ç is the owner of the copyright in its MLSÂ® System. Data is deemed reliable but is not guaranteed accurate by Pillar 9â,,ç. The trademarks MLSÂ®, Multiple Listing ServiceÂ® and the associated logos are owned by The Canadian Real Estate Association (CREA) and identify the quality of services provided by real estate professionals who are members of CREA. Used under license.