

# \$199,000 - 19, 714040 71 Range, Rural Grande Prairie No. 1, County of

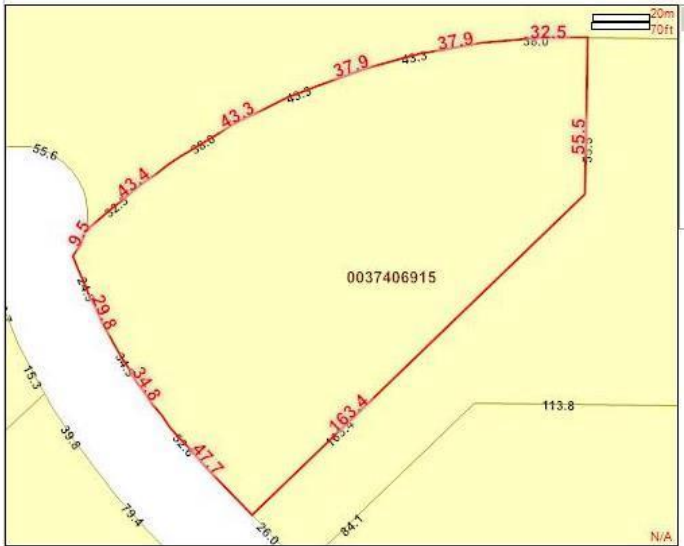
MLS® #A2214938

**\$199,000**

0 Bedroom, 0.00 Bathroom,  
Land on 4.29 Acres

NONE, Rural Grande Prairie No. 1, County of,  
Alberta

VACANT LOT AND IMMEDIATE POSSESSION!!! This 4.29 acre lot is ready to build on and zoned CR 5 country residential. Enjoy the convenience of being just minutes from Grande Prairie, where youâ€™ll find a variety of amenities to suit your lifestyle. With flexible options for build-to-suit and carrying options available, your vision can become a reality. Donâ€™t miss out on this incredible opportunity to invest in a community. For more details and to explore your options, call Sean today! Your dream home is just a lot away!



## Essential Information

MLS® #	A2214938
Price	\$199,000
Bathrooms	0.00
Acres	4.29
Type	Land
Sub-Type	Residential Land
Status	Active

## Community Information

Address	19, 714040 71 Range
Subdivision	NONE
City	Rural Grande Prairie No. 1, County of
County	Grande Prairie No. 1, County of

Province	Alberta
Postal Code	T8W 5K5

### **Additional Information**

Date Listed	April 25th, 2025
Days on Market	3
Zoning	CR5

### **Listing Details**

Listing Office	RE/MAX Grande Prairie
----------------	-----------------------

Data is supplied by Pillar 9â„¢ MLS® System. Pillar 9â„¢ is the owner of the copyright in its MLS® System. Data is deemed reliable but is not guaranteed accurate by Pillar 9â„¢. The trademarks MLS®, Multiple Listing Service® and the associated logos are owned by The Canadian Real Estate Association (CREA) and identify the quality of services provided by real estate professionals who are members of CREA. Used under license.