

\$169,900 - Rge Rd 22, Rural Parkland County

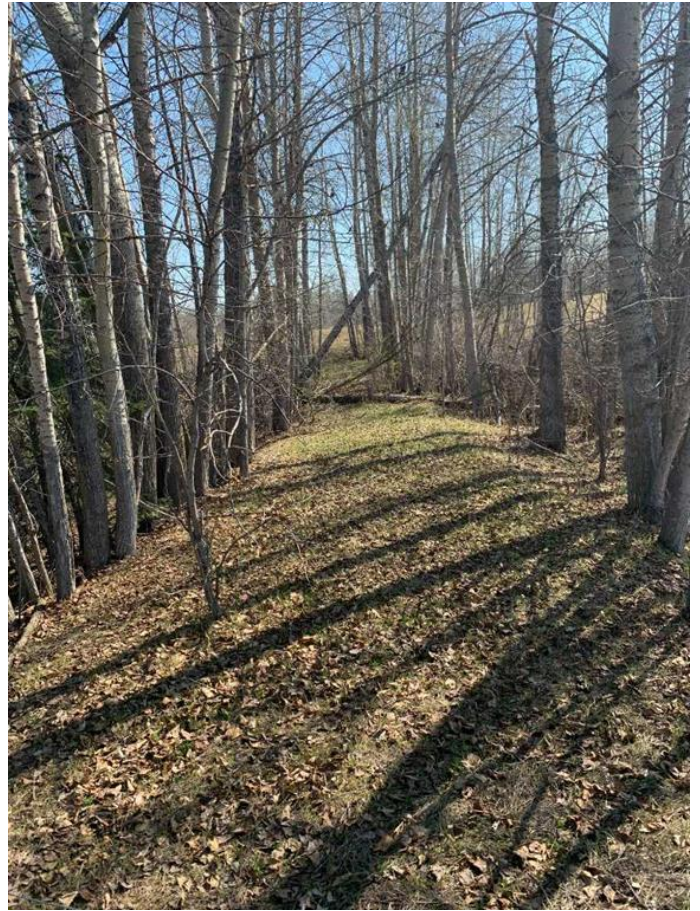
MLS® #A2215483

\$169,900

0 Bedroom, 0.00 Bathroom,
Land on 3.85 Acres

Brightbank Estates, Rural Parkland County,
Alberta

Wow care to own a nice quiet acreage only 25 minutes south west of Edmonton in a neat and well planned sub division just off pavement. This 3.85 acre parcel has some trees and a private lane driveway that opens up to a gentle slope boasting a nice building site where a walkout basement would certainly be possible. Shopping is only minutes away in Stony Plain or Spruce Grove. This truly is an opportunity at a very affordable value



Essential Information

MLS® #	A2215483
Price	\$169,900
Bathrooms	0.00
Acres	3.85
Type	Land
Sub-Type	Residential Land
Status	Active

Community Information

Address	Rge Rd 22
Subdivision	Brightbank Estates
City	Rural Parkland County
County	Parkland County
Province	Alberta
Postal Code	T7Y 2H9

Additional Information



Date Listed April 26th, 2025

Zoning Country Res

Listing Details

Listing Office Royal LePage Wildrose Real Estate-Sundre

Data is supplied by Pillar 9â„¢ MLS® System. Pillar 9â„¢ is the owner of the copyright in its MLS® System. Data is deemed reliable but is not guaranteed accurate by Pillar 9â„¢. The trademarks MLS®, Multiple Listing Service® and the associated logos are owned by The Canadian Real Estate Association (CREA) and identify the quality of services provided by real estate professionals who are members of CREA. Used under license.