

\$146,000 - 109 Wilkins Place Crescent, Hanna

MLS® #SC0061748

\$146,000

0 Bedroom, 0.00 Bathroom,
Land on 0.48 Acres

Hanna, Hanna, Alberta

Build your dream home! A large lot which is .48 acres with a beautiful view of the golf course. The seller will divide lot into 2 lots and sell 1 for \$74,000.00. Lot plan and Real Property Report available to view. "Information is believed to be accurate but not warranted to be so".



Essential Information

MLS® #	SC0061748
Price	\$146,000
Bathrooms	0.00
Acres	0.48
Type	Land
Sub-Type	Land
Status	Active

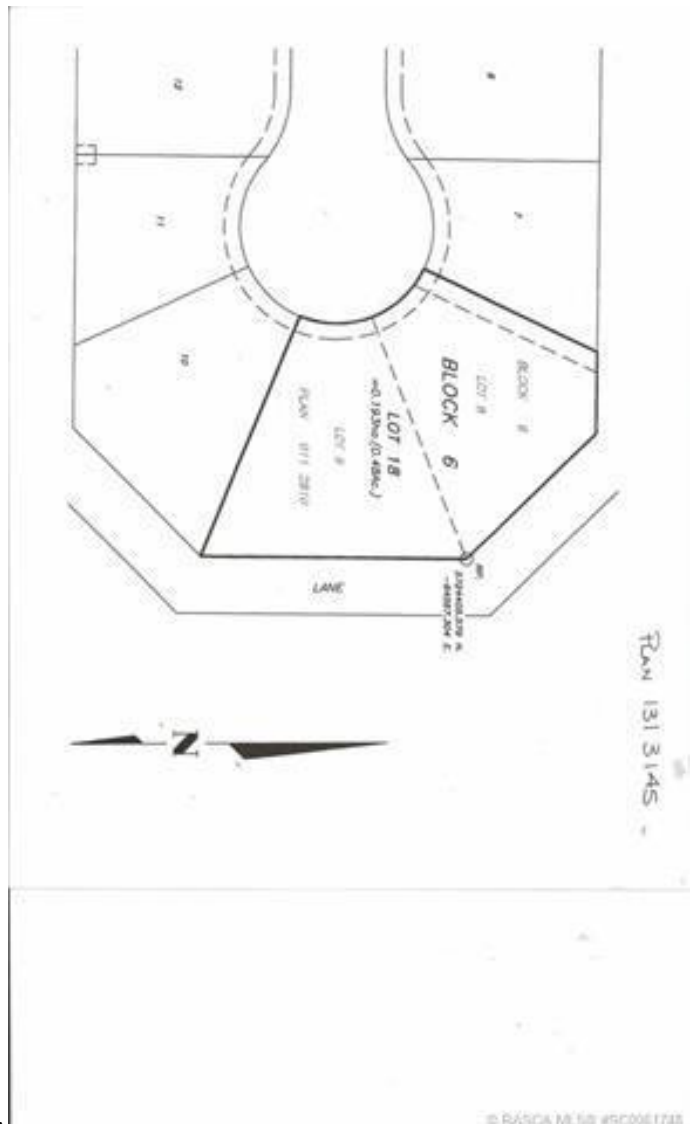
Community Information

Address	109 Wilkins Place Crescent
Subdivision	Hanna
City	Hanna
County	Special Area 2
Province	Alberta
Postal Code	T0J 1P0

Amenities

Utilities	Electricity Available, Sewer Available
Parking	None

Exterior



© RASCA MLS® #SC0061748

Lot Description Standard Shaped Lot, Near Golf Course

Additional Information

Date Listed June 3rd, 2015

Days on Market 3566

Zoning R1

Listing Details

Listing Office Hanna Realty

Data is supplied by Pillar 9â„¢ MLSÂ® System. Pillar 9â„¢ is the owner of the copyright in its MLSÂ® System. Data is deemed reliable but is not guaranteed accurate by Pillar 9â„¢. The trademarks MLSÂ®, Multiple Listing ServiceÂ® and the associated logos are owned by The Canadian Real Estate Association (CREA) and identify the quality of services provided by real estate professionals who are members of CREA. Used under license.